

RA-BE1531
BELLA ACCESSIBLE LINK TOILET SUITE

RAK
CERAMICS

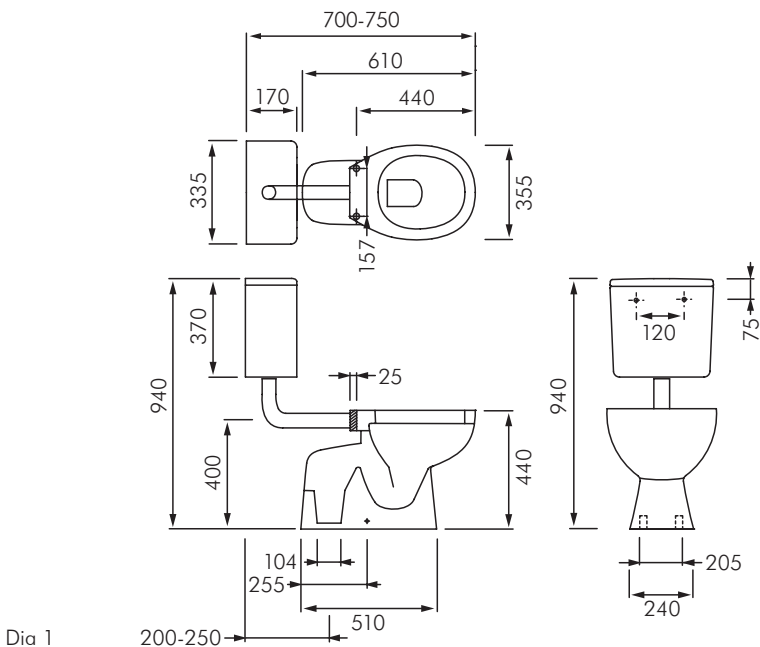


PACK INCLUDES

- RA-BE15300S link suite WC
- RA-BE165000 wall mounted cistern tank
- RA-BE145100 seat and lid
- Fixing kit ref RA-FS37UK
- Installation Instructions
- Guarantee Form

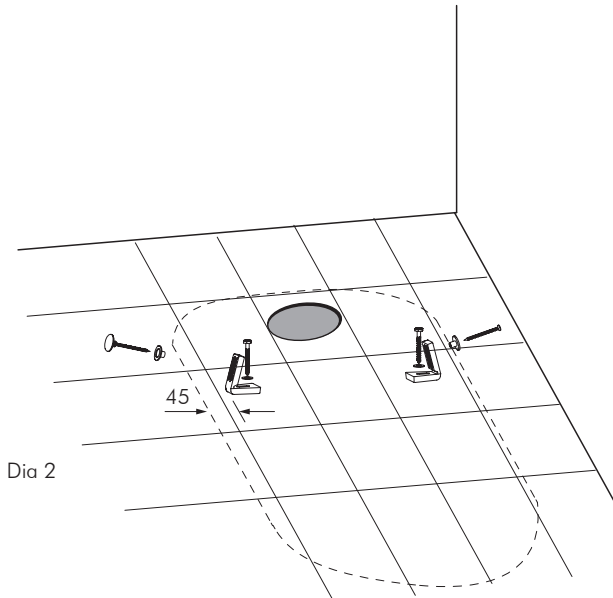
NOTES

- Inspect all items thoroughly immediately on receipt to ensure it meets your requirements.
- Inspect product for defects prior to installation. MacDonald Industries will not be responsible for any claims related to replacements after a product has been installed.
- Ensure floor on which WC is to be installed is level and of a suitable material for installation of a WC.
- Check water pressure does not exceed 500kPa. Fit pressure reducing valve if necessary.
- Check water inlet / waste outlet positions are correct for the WC supplied according to the measurements in Dia. 1
- All measurements provided are based on finished wall/floor.
- Installation must only be completed by a registered plumber in accordance with AS/NZS3500 requirements.
- Only fix WC's through floor mounting brackets supplied.
- Where floor is sloped bed the WC using a sand and cement mixture or proprietary levelling compound.



INSTALLATION WC PAN

- Position WC onto pan connector checking that pan is square to walls.
- Mark the position of fixing brackets on the floor and then remove WC. **Do not use fixing holes as a guide for drilling as damage may occur.**
- Drill holes into floor as per Dwg 2 and fix mounting brackets.
- Ensure floor is clean of dirt, dust or impurities.
- Re-fit WC securing it to the mounting brackets using sleeves/screws supplied.
- Fit chrome screw caps supplied.
- Apply a bead of flexible mould resistant silicon around base of pan.



INSTALLATION CISTERN TANK

- Cistern attaches to wall using a metal retaining plate and fixing screws
- Fit flush pipe to cistern and pan using pan connector supplied. Trim length of flush pipe to suit pan distance from the wall
- All RAK cisterns use Geberit fill and flush valves. Each cistern has specific Geberit instructions contained within the cistern.
- Disconnect water supply to cistern and flush line thoroughly to ensure no debris enters fill valve.
- Reconnect water and check flush.
- Each cistern is factory set to deliver a 6/3L flush. Flush volume can be adjusted by rotating the level screw on the inlet fill valve.

SPARES

- Cistern fill valve
 - Bottom inlet - RA-FS68GEBRI
- Cistern flush valve - RA-FS68GEBF
- WC fixing kit - RA-FS37UK



**MACDONALD
INDUSTRIES LIMITED**

Auckland (Head Office)

20 Carr Rd, Three Kings
Auckland 1041

P: 09 624 1115

F: 09 624 1110

E: sales@macdonaldindustries.co.nz

Wellington

P: 04 569 8033

F: 04 569 8066

Christchurch

P: 03 348 2356

F: 03 348 2376

www.macdonaldindustries.co.nz