



Cleaners Room Products

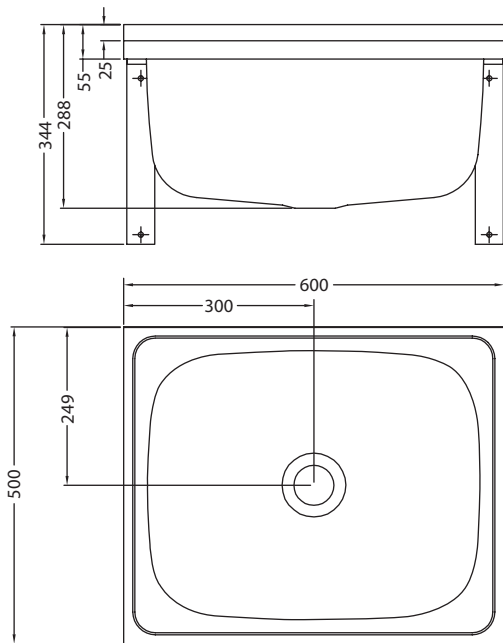
A selection of products suitable for dedicated cleaning rooms.

- Wall mounted cleaners sinks
- Floor mounted cleaners sinks
- Wall mounted faucets
- Stainless steel accessories



MACDONALD
INDUSTRIES LIMITED

FR-CS



Wall Mounted Cleaner's Sinks

Franke are world renowned manufacturers of quality stainless steel products.

The Franke cleaners sink is a one piece pressed bowl, supplied with galvanised steel support brackets, designed to be wall mounted. It is available with or without a bucket grid, as shown.

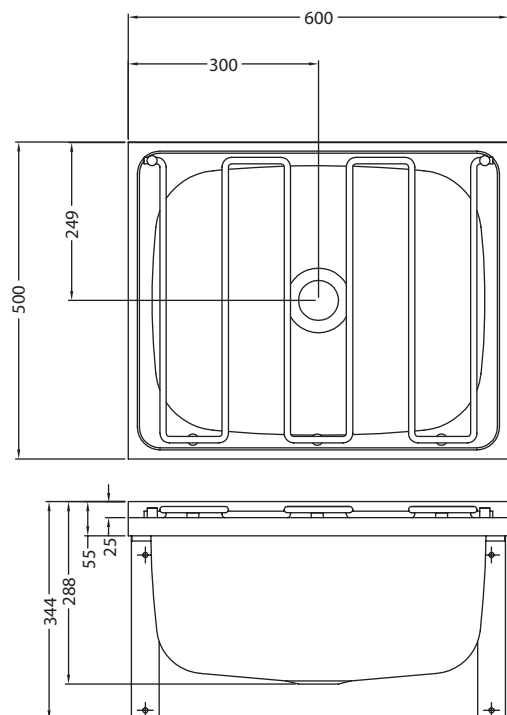
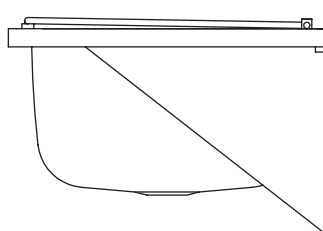
Optional back splashes ensure wall protection.

For suitable faucets and accessories refer to back page of this brochure.

Models

- **FRCS** – 600 x 500 standard wall hung sink with mounting brackets, 40mm waste not included.
- **FRCSH** – As above but with bucket grid fitted.
- **FRCS-BS** – Standard 600mm high backsplash.
- **FRCS-BS2** – Angled backsplash used where sink is installed into a corner and back and side wall require protection.

FRCSH



Floor Mounted Cleaners Sinks

Zurn floor mounted cleaners sinks are more like a deep shower tray than a conventional cleaners sink. Because they are floor mounted the cleaners do not have to lift buckets high and can deal with cleaning equipment at a convenient level.

Molded from a composite stone and resin compound, the Zurn sinks are available in 610 x 610 and 914 x 610 sizes. Supplied with a 40mm Easiclean waste.

Normally installed into corner of room, optional stainless steel backsplashes give wall protection where needed. Optional bumper guards offer edge protection to 2 exposed top edges of sink.

For suitable faucets and accessories refer to back page of this brochure.

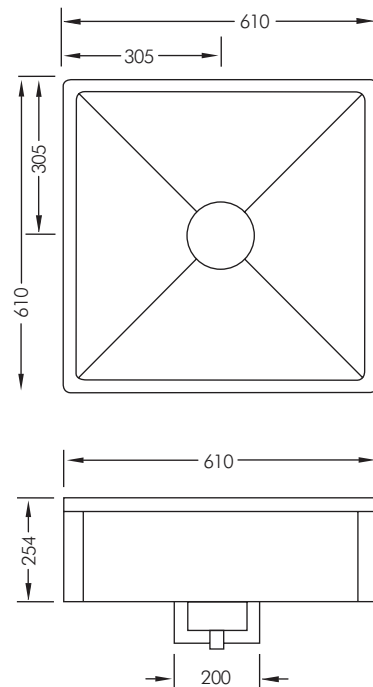
Models

- **Z-1996-24** – 610 x 610 cleaners sink.
- **Z-1996-36** – 610 x 914 cleaners sink.

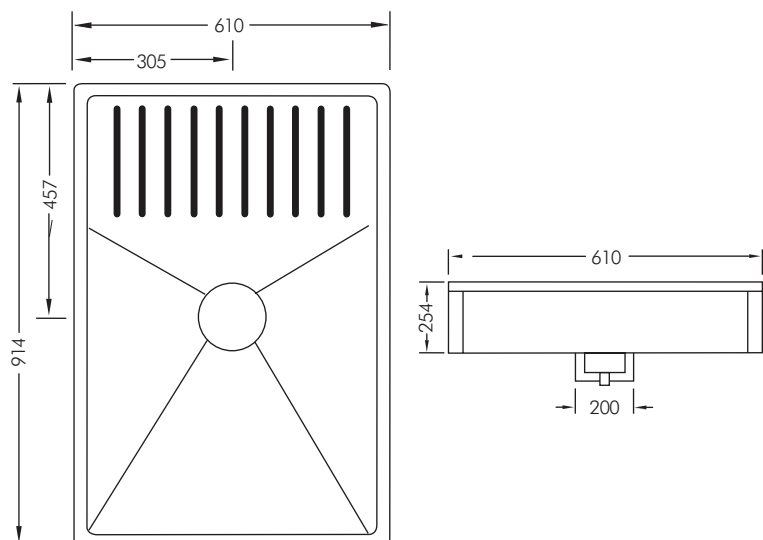
Options

- **Z-BS-24** – bumper guard set to suit Z-1996-24 (2 sides only).
- **Z-BS-36** – bumper guard set to suit Z-1996-36 (2 sides only).
- **Z-WG-24** – wall guard set to suit Z-1996-24 (2 sides only).
- **Z-WG-36** – wall guard set to suit Z-1996-36 (2 sides only).

Z-1996-24 with Z-BS-24 bumper guard set



Z-1996-36





Sink Faucet

The Zurn Mop Sink Faucet is specifically designed for use in the cleaners room.

Features include:

- Bucket hanger.
- Wall support strut.
- Integral Vacuum Breaker for backflow protection when connected to hose.
- Optional 600mm hose to allow bucket filling.
- Easy to use 1/4 turn ceramic disc cartridges.

Model

- Z-SF

Hose & Hanger Bracket

The Zurn hose and hanger bracket is suitable for connection to the Z-SF sink faucet (above) allowing easy filling of buckets. Particularly suitable where the Z-1996 cleaners sinks are used. Hanger bracket allows for the hose to be held away from the sink when not in use.

Model

- Z-HH

Z-MH3



Mop Hanger Bracket

Stainless steel hanger bracket allows for mops and brooms to be neatly stored. If positioned over the sink it allows for mops to drip directly into the sink.

Model

- Z-MH3 – 3 station hanger (660 long)
- Z-MH4 – 4 station hanger (915 long)
- Z-MH-5 – 5 station hanger (1170 long)

AS0690-618



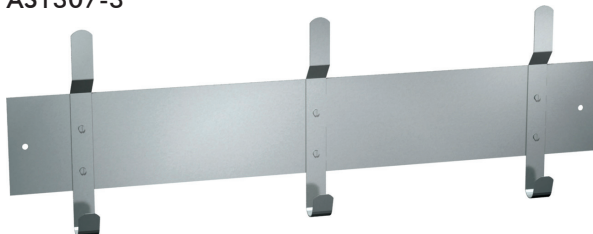
Shelves

1.2mm stainless steel shelves with 10mm depression allowing storage of cleaners provisions minimising potential spillage. Available in 150 or 200mm depth.

Model

- AS0690-618 – 150 x 450
- AS0690-624 – 150 x 600
- AS0690-818 – 200 x 450
- AS0690-824 – 200 x 600

AS1307-3



Robe Hooks

Stainless steel robe hooks, available with 3, 4 or 5 hooks.

Model

- AS1307-3 – 3 hooks
- AS1307-4 – 4 hooks
- AS1307-5 – 5 hooks