

350DA DOUBLE CHECK DETECTOR ASSEMBLY

WILKINS

APPLICATION

Designed for installation on potable water connections in fire sprinkler systems to protect against both backsiphonage and backpressure of polluted water into the potable water supply. Model 350DA provides medium level protection where a potential health hazard exists. Incorporates metered by-pass to detect leaks and unauthorized water use.

STANDARDS COMPLIANCE

(Sizes 65 - 250mm Horiz. & Vert.)
 (350mm Horizontal Only)

- ASSE® Listed 1048 (Sizes 65 - 300mm)
- CSA® Certified B64.5 (Sizes 65 - 200mm)
- AWWA Compliant C510 (Sizes 65 - 300mm)
- UL® Classified (Sizes 65 - 300mm)
- C-UL® Classified (Sizes 65 - 300mm)
- FM® Approved (Sizes 65 - 250mm)
- NYC MEA 147-99-M Vol 4 (65 - 250mm)
- Approved by the Foundation for Cross Connection Control and Hydraulic Research at the University of Southern California (Sizes 65 - 250mm)

MATERIALS

Main valve body	Ductile Iron ASTM A 536 Grade 4
Access covers	Ductile Iron ASTM A 536 Grade 4
Coatings	FDA Approved fusion epoxy finish
Internals	Stainless steel, 300 Series NORYL™, NSF Listed
Fasteners	Stainless Steel, 300 Series
Elastomers	EPDM (FDA approved) Buna Nitrile (FDA approved)
Polymers	NORYL™, NSF Listed
Springs	Stainless Steel, 300 Series

Attention:

Model 350DA (flange body) and Model 350ADA (grooved body) have different lay lengths.

DIMENSIONS & WEIGHTS (do not include pkg.)

MODEL SIZE (mm)	A Less gates	B	Weight kgs (less gates)
64	403	89	24.1
80	403	89	24.1
100	533	152	41.3
150	673	178	74.9
200	959	216	162.5
250	959	216	176.2



FEATURES

Sizes: 65,80,100,150,200,250 (mm)

Maximum working water pressure: 1203 kPa

Maximum working water temperature: 60°C

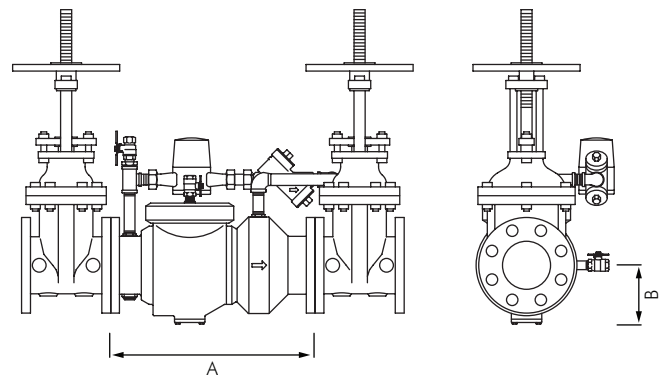
Hydrostatic test pressure: 2413 kPa

End connections (Flanged): BS10 Table E
 Table D (100mm only)

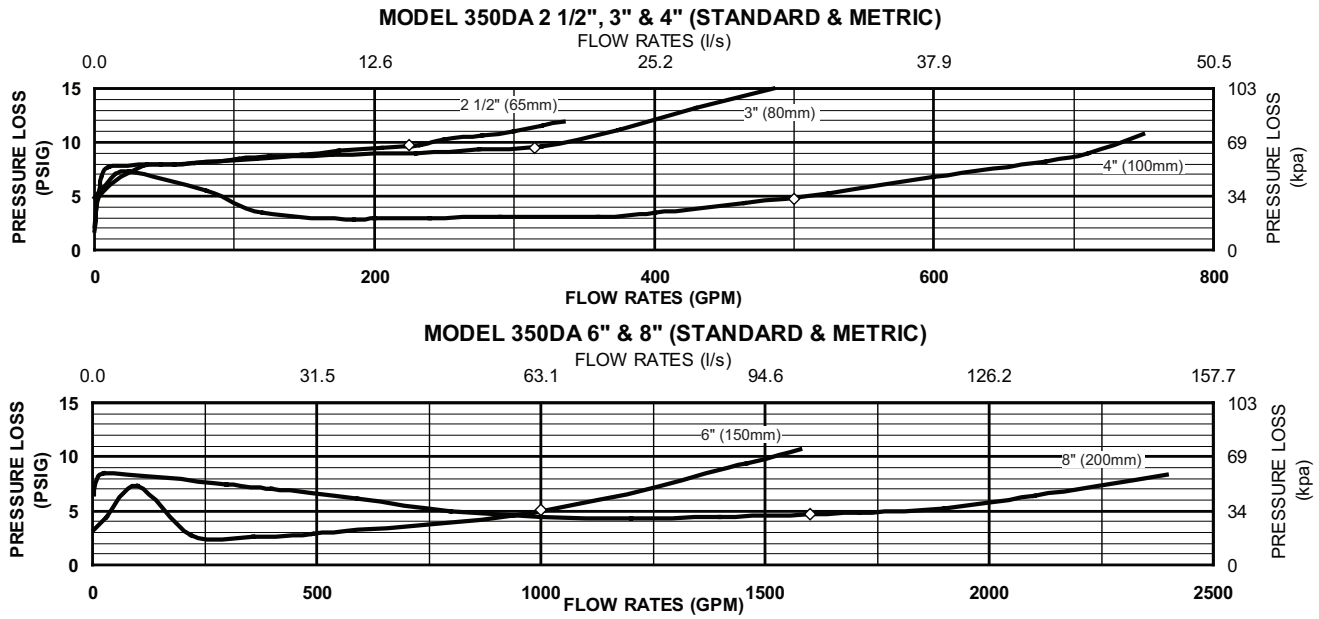
- Spring tension sums conform to pressure drop requirements of AS/NZS2845.1 2010
- Two lockable isolation valves fitted on bypass to conform to AS/NZS2845.1 2010

OPTIONS (Suffixes can be combined)

- LE - less shut-off valves (Table E flanges)
- LD - less shut-off valves (Table D flanges)

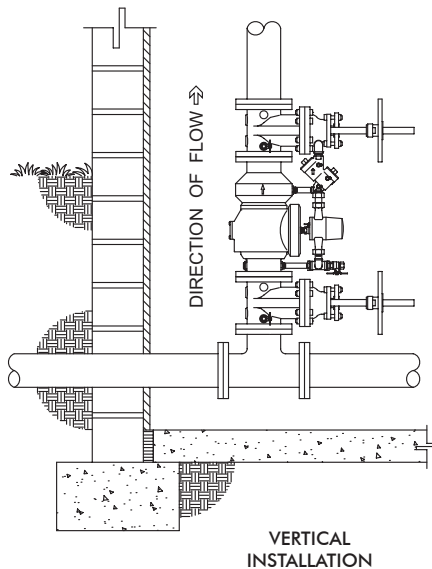


FLOW CHARACTERISTICS



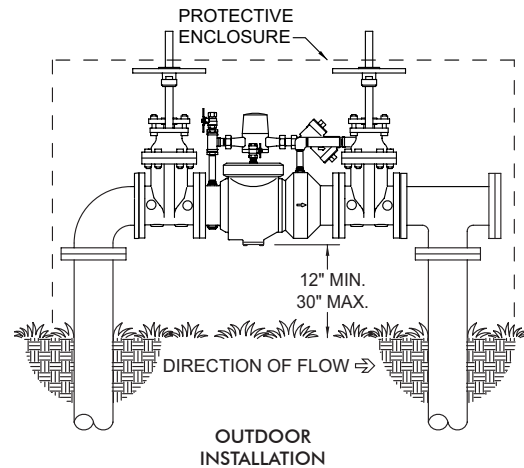
TYPICAL INSTALLATION

Local codes shall govern installation requirements.
The installation shall be made so that no part of the unit can be submerged.



Capacity thru Schedule 40 Pipe (GPM)

Pipe size	5 ft/sec	7.5 ft/sec	10 ft/sec	15 ft/sec
2 1/2"	75	112	149	224
3"	115	173	230	346
4"	198	298	397	595
6"	450	675	900	1351
8"	780	1169	1559	2339
10"	1229	1843	2458	3687
12"	1763	2644	3525	5288



SPECIFICATIONS

The Double Check Detector Backflow Prevention Assembly shall be ASSE® Listed 1048, and supplied with full port gate valves. The main body and access cover shall be epoxy coated ductile iron (ASTM A 536 Grade 4), the seat ring and check valve shall be Noryl™ (NSF Listed), the stem shall be stainless steel (ASTM A 276) and the seat disc elastomers shall be EPDM. The first and second check valves shall be accessible for maintenance without removing the device from the line. The Double Check Detector Backflow Prevention Assembly shall be a WILKINS Model 350DA.