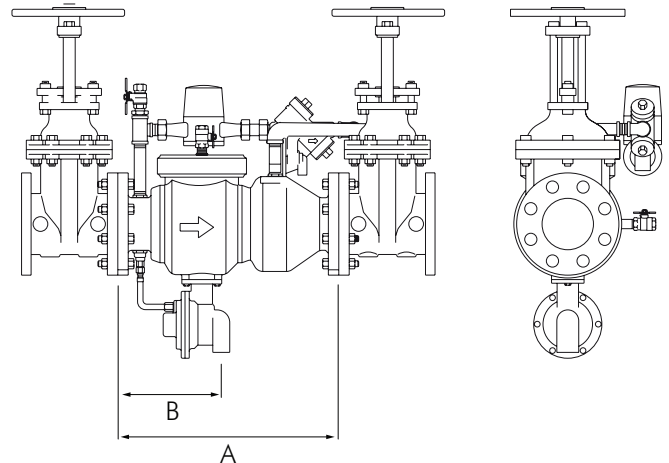
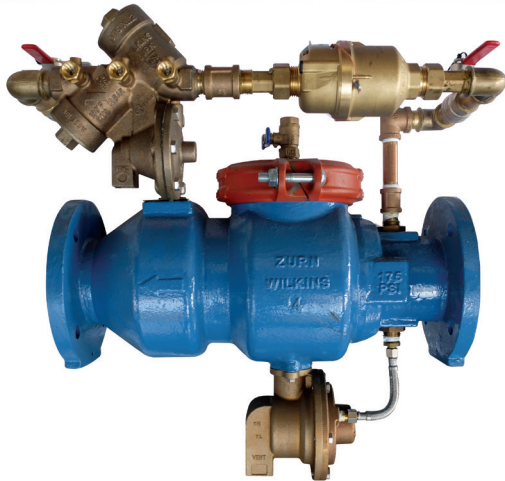


WILKINS - 375DA

REDUCED PRESSURE DETECTOR ASSEMBLY

WILKINS



FEATURES

- Sizes: ☐65 ☐80 ☐100 ☐150 ☐200 ☐250
- Maximum working water pressure 1203 kPa
- Maximum working water temperature 60°C
- Hydrostatic test pressure 2413 kPa
- End connections (Flanged) BS5163
- Spring tension sums conform to pressure drop requirements of AS/NZS2845.1 2010
 - Two lockable isolation valves fitted on bypass to conform to AS/NZS2845.1 2010

OPTIONS (Suffixes can be combined)

- ☐ LE - less shut-off valves (Table E flanges)
- ☐ LD - less shut-off valves (Table D flanges)
- ☐ E - with NRS Table E gate valves
- ☐ D with NRS Table D gate valves

APPLICATION

Designed for installation on potable water lines in fire protection systems to protect against both backsiphonage and backpressure of contaminated water into the potable water supply. The Model 375DA shall provide protection where a potential health hazard exists. Incorporates metered by-pass to detect leaks and unauthorized water use.

STANDARDS COMPLIANCE

(Unless otherwise noted, applies to sizes 65 - 250mm)

- ASSE® Listed 1047 (65 - 200mm)
- UL® Classified
- CSA® Certified (100 & 150mm)
- C-UL® Classified
- FM® Approved
- NYC MEA 218-01-M VOL 3
- Approved by the Foundation for Cross Connection Control and Hydraulic Research at the University of Southern California

DIMENSIONS & WEIGHTS (do not include pkg.)

| MODEL SIZE (mm) | A (Less gates) | B (approx only) | Weight kgs (less gates) |
|-----------------|----------------|-----------------|-------------------------|
| 64 | 403 | 213 | 27.2 |
| 80 | 403 | 213 | 27.2 |
| 100 | 533 | 254 | 44.5 |
| 150 | 673 | 313 | 79.5 |
| 200 | 959 | 426 | 171 |
| 250 | 959 | 426 | 185 |

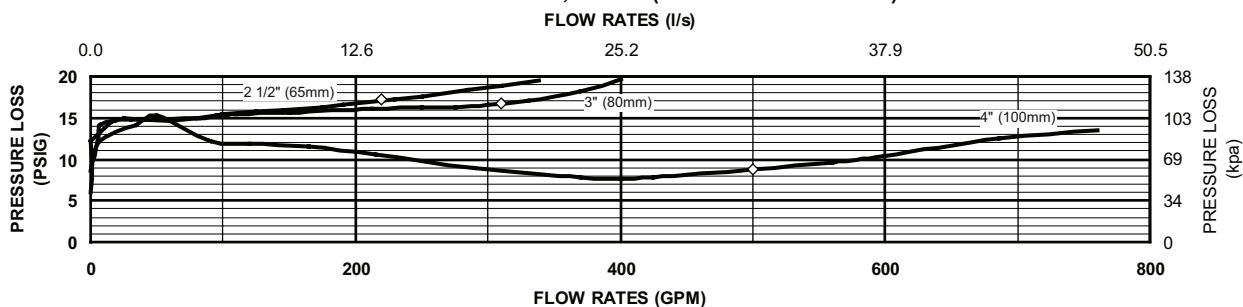
NOTE: Model 375DA (flange body) and Model 375ADA (grooved body have different lay lengths.

MATERIALS

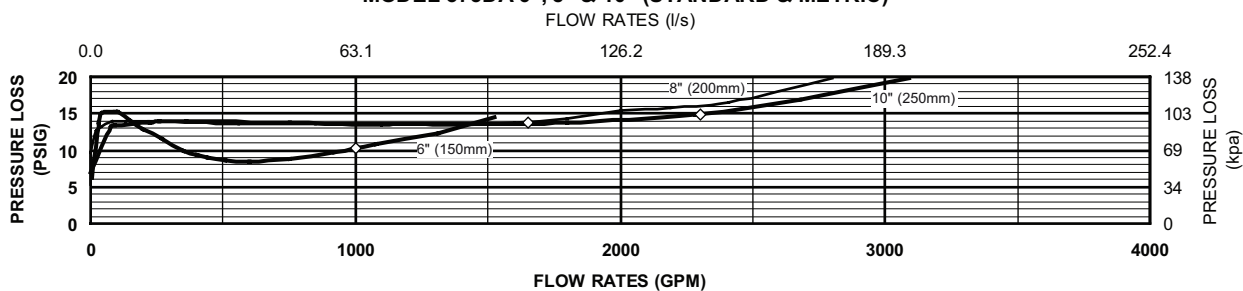
| | |
|------------------------|---|
| Main valve body | Ductile Iron ASTM A 536 Grade 4 |
| Access covers | Ductile Iron ASTM A 536 Grade 4 |
| Coatings | FDA Approved fusion epoxy finish |
| Internals | Stainless steel, 300 Series NORYL™, NSF Listed |
| Fasteners | Stainless Steel, 300 Series |
| Elastomers | EPDM (FDA approved) Buna Nitrile (FDA approved) |
| Polymers | NORYL™, NSF Listed |
| Springs | Stainless steel, 300 series |
| Sensing line | Stainless steel, braided hose |

FLOW CHARACTERISTICS

MODEL 375DA 2 1/2", 3" & 4" (STANDARD & METRIC)



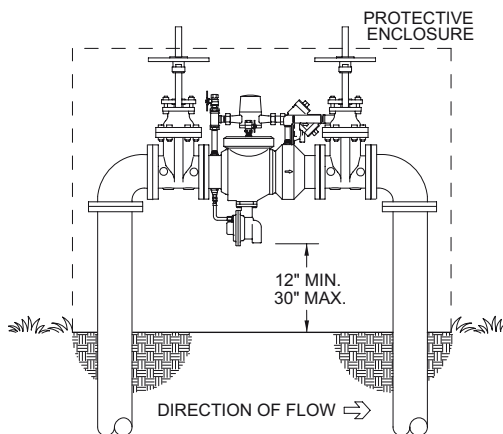
MODEL 375DA 6", 8" & 10" (STANDARD & METRIC)



◇ Rated Flow (Established by approval agencies)

TYPICAL INSTALLATION

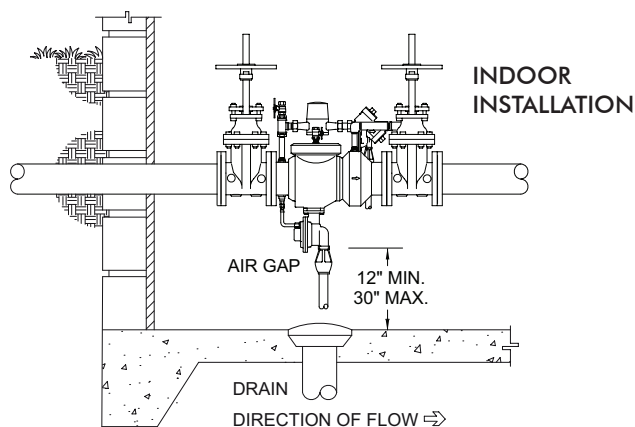
Local codes shall govern installation requirements. To be installed in accordance with the manufacturer's instructions and the latest edition of the Uniform Plumbing Code. Unless otherwise specified, the assembly shall be mounted at a minimum of 12" (305mm) and a maximum of 30" (762mm) above adequate drains with sufficient side clearance for testing and maintenance. The installation shall be made so that no part of the unit can be submerged.



OUTDOOR
INSTALLATION

Capacity thru Schedule 40 Pipe (GPM)

| Pipe size | 5 ft/ sec | 7.5 ft/ sec | 10 ft/ sec | 15 ft/ sec |
|-----------|--------------|----------------|---------------|---------------|
| 2 1/2" | 75 | 112 | 149 | 224 |
| 3" | 115 | 173 | 230 | 346 |
| 4" | 198 | 298 | 397 | 595 |
| 6" | 450 | 675 | 900 | 1351 |
| 8" | 780 | 1169 | 1559 | 2339 |
| 10" | 1229 | 1843 | 2458 | 3687 |
| 12" | 1763 | 2644 | 3525 | 5288 |



SPECIFICATIONS

The Reduced Pressure Detector Backflow Prevention Assembly shall be ASSE® Listed 1047, and supplied with full port OS & Y gate valves. The main body and access cover shall be epoxy coated ductile iron (ASTM A 536 Grade 4), the seat ring and check valve shall be NORYL™, the stem shall be stainless steel (ASTMA 276) and the seat disc elastomers shall be EPDM. The checks and the relief valve shall be accessible for maintenance without removing the device from the line. The Reduced Pressure Detector Backflow Prevention Assembly shall be a WILKINS Model 375DA.