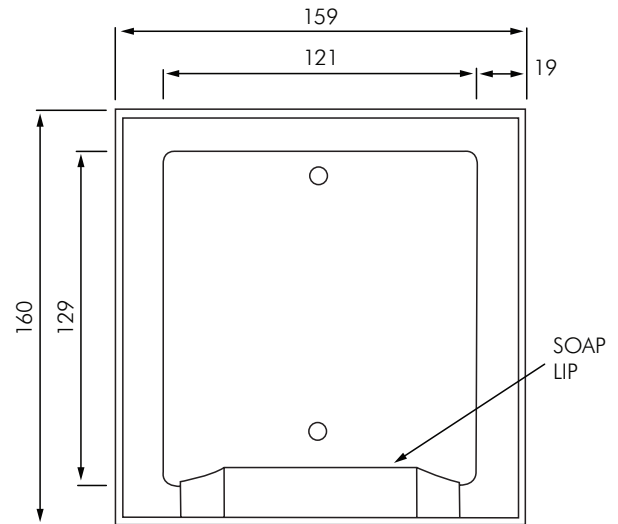


AS7404 RECESS MOUNTED SOAP HOLDER



DESCRIPTION

The ASI recess mounted soap holder designed for wet or dry wall installations. It is manufactured seamless of one-piece 22 gauge stainless steel Type 304 stainless steel with satin or bright finish. It has a raised lip which prevents the soap from slipping out of the holder.

MODELS

- AS7404S** - Standard model in satin finish.
AS7404B - Standard model in bright finish.

Auckland (Head Office)

20 Carr Rd, Mt Roskill
Auckland 1041
P: 09 624 1115
F: 09 624 1110
E: sales@macdonaldindustries.co.nz

Wellington

P: 04 569 8033
F: 04 569 8066

Christchurch

P: 03 348 2356
F: 03 348 2376