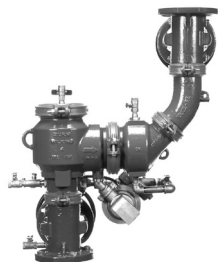
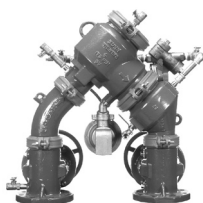


SPECIFICATION SUBMITTAL SHEET



MODEL 475DAV



MODEL 475DA

FEATURES

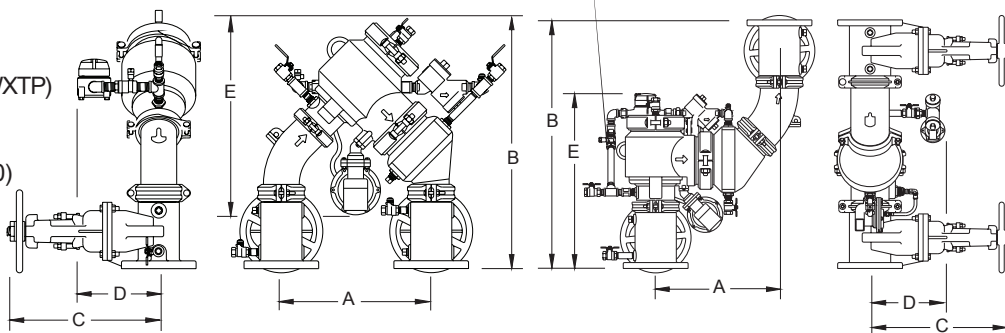
Sizes:	<input type="checkbox"/> 4"	<input type="checkbox"/> 6"	<input type="checkbox"/> 8"	<input type="checkbox"/> 10"
Maximum working water pressure	175 PSI			
Maximum working water temperature	140°F			
Hydrostatic test pressure	350 PSI			
End connections (Grooved for steel pipe)	AWWA C606-87			
(Flanged) ANSI B16.1	Class 125			

OPTIONS (Suffixes can be combined)

- ☐ - with OS & Y gate valves (standard)
- ☐ L - less shut-off valves (grooved body connections)
- ☐ LM - less water meter
- ☐ - with remote reading meter
- ☐ - with gpm meter (standard)
- ☐ - with cu ft/min meter
- ☐ V - vertical flow up configuration
- ☐ G - with groove end gate valves
- ☐ FG - with flanged inlet gate connection and grooved outlet gate connection
- ☐ MS - with integral Relief Valve Monitor Switch
- ☐ BGVIC - with grooved end butterfly valves (see document BF-475DA&VBGVIC for dimensions and approvals)
- ☐ PI - with Post Indicator Gate Valve (4"-10")

ACCESSORIES

- ☐ Air gap (see spec sheet BF-AG)
- ☐ Repair kit (rubber only)
- ☐ Thermal expansion tank (Model WXTP)
- ☐ Valve setter (Model FLS or MJS or MJFS)
- ☐ Gate valve tamper switch (OSY-40)
- ☐ QT-SET Quick Test Fitting Set
- ☐ Test Cock Lock (Model TCL24)



DIMENSIONS & WEIGHTS (do not include pkg.)

MODEL 475DA & 475DAV SIZE	DIMENSIONS (approximate)														WEIGHT			
	A		B WITH GATE VALVES		B LESS GATE VALVES		C OS&Y OPEN		C OS&Y CLOSED		D		E		LESS GATE VALVES		OS&Y GATE VALVES	
	in.	mm	in.	mm	in.	mm	in.	mm	in.	mm	in.	mm	in.	mm	lbs.	kg	lbs.	kg
4" 475DA	18 5/16	465	30	762	21	533	22 3/4	578	18 1/4	464	8	203	23 3/16	589	113	51.3	303	137.4
4" 475DAV	18 7/8	479	36 1/2	907	18 1/2	470	22 3/4	578	18 1/4	464	8	203	21	533	113	51.3	303	137.4
6" 475DA	18 11/16	475	35 1/2	902	25	635	30 1/8	765	23 3/4	603	10	254	26	660	187	84.9	487	221
6" 475DAV	21	533	42	1067	21	533	30 1/8	765	23 3/4	603	10	254	22	559	187	84.9	487	221
8" 475DA	29	737	46	1168	34 7/16	875	37 3/4	959	29 1/4	743	13	330	33 1/4	845	421	191.1	897	406.8
8" 475DAV	30 5/16	770	53 1/2	1359	30 5/16	770	37 3/4	959	29 1/4	743	13	330	37 7/8	962	421	191.1	897	406.8
10" 475DA	29	737	47 1/2	1207	34 7/16	875	45 3/4	1162	35 3/8	899	13	330	33 1/4	845	439	199.3	1113	504.8
10" 475DAV	30 5/16	770	56 1/2	1435	30 5/16	770	45 3/4	1162	35 3/8	899	13	330	39 3/8	1000	439	199.3	1113	504.8

APPLICATION

Designed for installation on potable water lines in fire protection systems to protect against both backsiphonage and backpressure of contaminated water into the potable water supply. The Model 475DA/475DAV shall provide protection where a potential health hazard exists. Incorporates metered by-pass to detect leaks and unauthorized water use.

STANDARDS COMPLIANCE

- ASSE® Listed 1047 (4" thru 8")
- UL® Classified (4" thru 10")
- C-UL® Classified (4" thru 10")
- FM® Approved (4" thru 8")
- NYC MEA 170-02-M VOL 2 (4-8")
- Approved by the Foundation for Cross Connection Control and Hydraulic Research at the University of Southern California (4" thru 8")

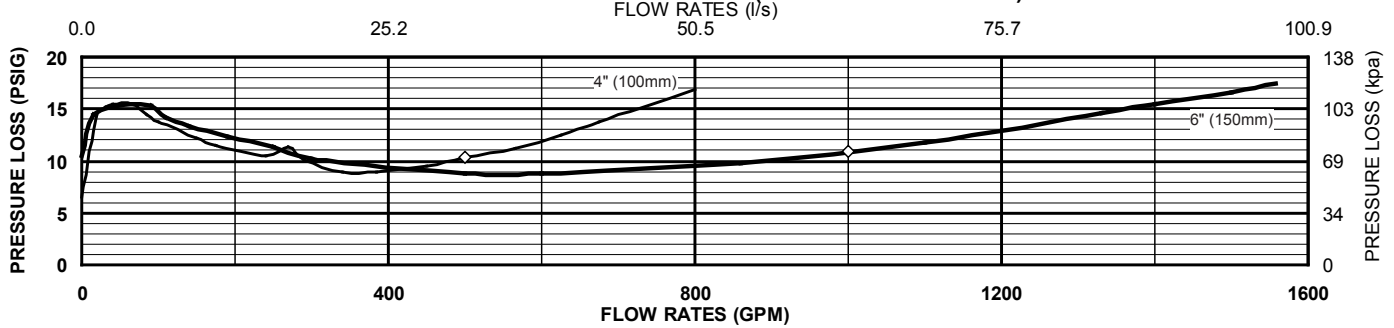
MATERIALS

Main valve body	Ductile Iron ASTM A 536 Grade 4
Access covers	Ductile Iron ASTM A 536 Grade 4
Coatings	FDA Approved fusion epoxy finish
Fasteners	Stainless Steel, 300 Series
Elastomers	EPDM (FDA approved)
	Buna Nitrile (FDA approved)
Polymers	NORYL™, NSF Listed
Springs	Stainless steel, 300 series

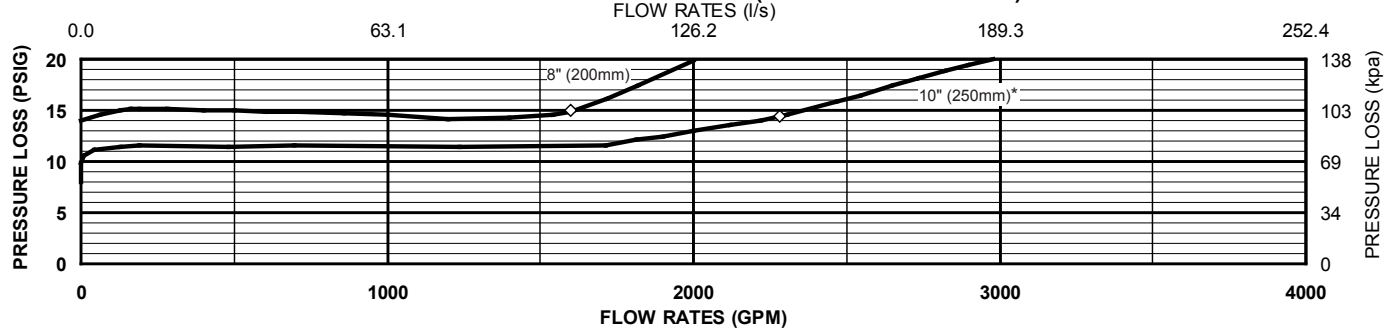
Relief Valve discharge port:	
2 1/2" - 6"	2.75 sq. in.
8" - 10"	3.69 sq. in.

FLOW CHARACTERISTICS

MODEL 475DA & 475DAV 4" & 6" (STANDARD & METRIC)



MODEL 475DA & 475DAV 8" & 10" (STANDARD & METRIC)

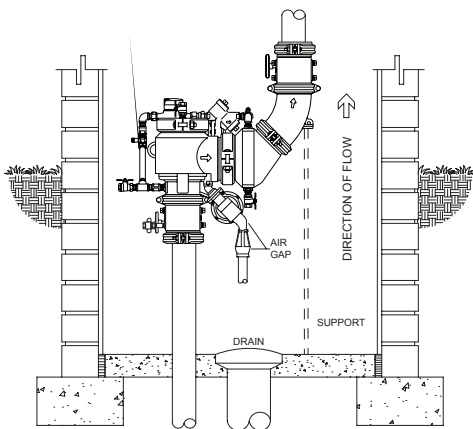


◇ Rated Flow (Established by approval agencies) (*UL curve)

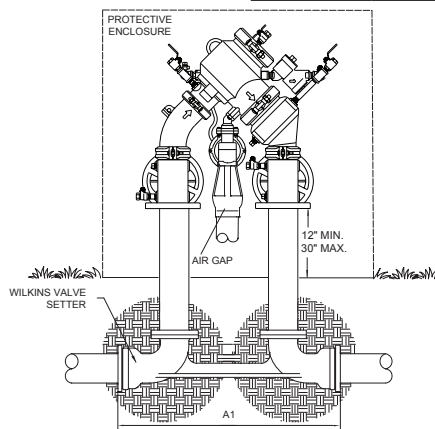
TYPICAL INSTALLATION

Local codes shall govern installation requirements. To be installed in accordance with the manufacturers' instructions and the latest edition of the Uniform Plumbing Code. Unless otherwise specified, the assembly shall be mounted at a minimum of 12" (305mm) and a maximum of 30" (762mm) above adequate drains with sufficient side clearance for testing and maintenance. The installation shall be made so that no part of the unit can be submerged.

Capacity thru Schedule 40 Pipe (GPM)				
Pipe size	5 ft/sec	7.5 ft/sec	10 ft/sec	15 ft/sec
2 1/2"	75	112	149	224
3"	115	173	230	346
4"	198	298	397	595
6"	450	675	900	1351
8"	780	1169	1559	2339
10"	1229	1843	2458	3687



VERTICAL INSTALLATION



OUTDOOR INSTALLATION

MODEL SIZE	DIMENSIONS (approximate)			
	A1 SETTER END TO END FLS		A1 SETTER END TO END MJS	
in. mm	in.	mm	in.	mm
4 100	31 5/16	795	29 5/16	745
6 150	34 3/4	884	32 3/4	832
8 200	47	1194	44 5/8	1133
10 250	51	1295	47	1194

SPECIFICATIONS

The Reduced Pressure Detector Assembly shall be ASSE® Listed 1047, and supplied with full port OS & Y gate valves. The main body and access covers shall be epoxy coated ductile iron (ASTM A 536 Grade 4), the seat ring and check valve shall be NORLYL™, the stem shall be stainless steel (ASTM A 276) and the seat disc elastomers shall be EPDM. The first and second checks shall be accessible for maintenance without removing the relief valve or the entire device from the line. If installed indoors, the installation shall be supplied with an air gap adapter. The Reduced Pressure Detector Assembly shall be a WILKINS Model 475DA or 475DAV.

WILKINS a Zurn company, 1747 Commerce Way, Paso Robles, CA 93446 Phone: 805/238-7100 Fax: 805/238-5766
 IN CANADA: ZURN INDUSTRIES LIMITED, 3544 Nashua Dr., Mississauga, Ontario L4V 1L2 Phone: 905/405-8272 Fax: 905/405-1292
 Product Support Help Line: 1-877-BACKFLOW (1-877-222-5356) • Website: <http://www.zurn.com>