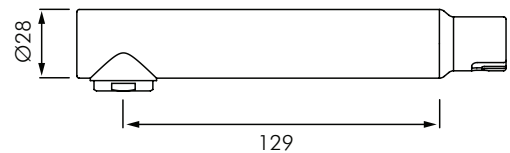
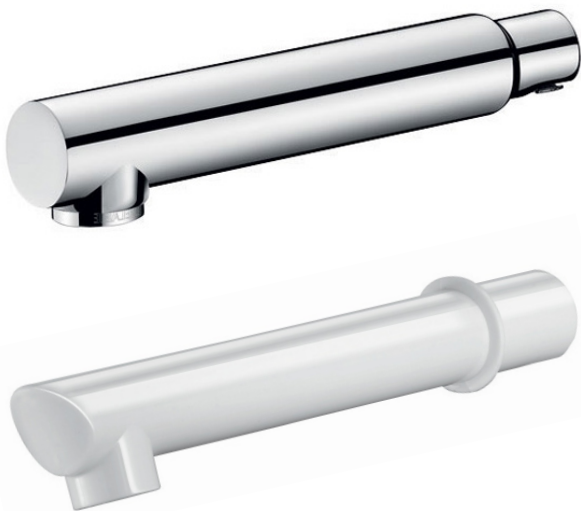
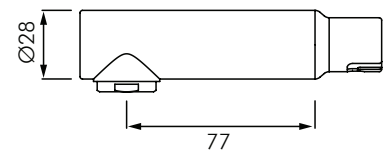


DE20002 / DE20003 / DE20015 BIOCLIP SPOUTS

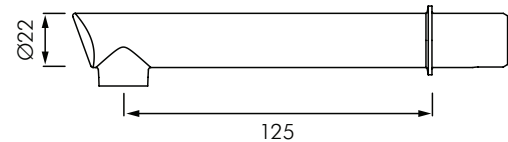
DELABIE



DE20002



DE20003



DE200015

DESCRIPTION

DELABIE BIOCLIP spouts are suitable for all Delabie Bioclip basin mixers and taps that have removable Bioclip spouts. These spouts have smooth interiors and low volume water (reduces bacterial development). The BIOCLIP spout can be removed allowing for curative or preventative cleaning/disinfection. BIOCLIP mixers and taps allow healthcare facilities to establish regular cleaning protocols to eliminate Biofilm and bacteria. Mixers and spouts with smooth interiors have 14x less Biofilm contamination than mixers with standard rough interiors.

Spouts available in 4 options; 2x chrome plated stainless steel spouts for cleaning/disinfection L.129mm; 2x chrome plated stainless steel spouts for cleaning/disinfection L.77mm; 15x disposable spouts made from recyclable Hostaform L.125mm (see models).

MODELS

- DE20002** - Removable \varnothing 28mm spouts L.129mm chrome plated stainless steel with hygienic flow straightener - come in pair of 2.
- DE20003** - Removable \varnothing 28mm spouts L.77mm chrome plated stainless steel with hygienic flow straightener - come in pair of 2.
- DE20015** - Removable, disposable \varnothing 22mm spout L.125mm made from Hostaform with star shaped flow straightener - come in packs of 15.