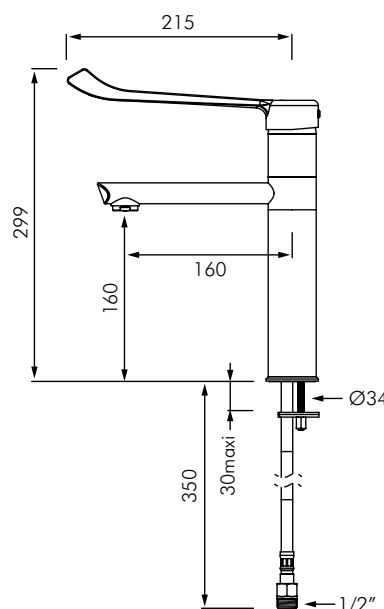


DE2564T1
 BIOSAFE
 SINK MIXER WITH SWIVEL SPOUT

DELABIE



DESCRIPTION

DELABIE DE2564T1 BIOSAFE is a mechanical sink or basin mixer with L.215mm hygiene control lever and L.160mm swivel spout. The design of the tap has smooth interior, has very low water retention and smooth interior to reduce Biofilm. Available with four different spout options (see models), standard dimensions H.160mm L.160mm with hygienic flow straightener. Pre-set maximum temperature limiter. Flow rate limited to 5L/min at 300kPa. Operating pressure is 100-500kPa, 300kPa is recommended. Chrome-plated solid brass body and spout with smooth interiors, hygienic scale-resistant flow straightener and reinforced fixing. High spout is suitable for fixing BIOFIL terminal filter (see separate BIOFIL information).

Supplied with PEX flexible connections, M1/2" unions and reinforced fixing.

INSTALLATION

- Deck mounted through Ø34mm hole.
- Reinforced fixation using 2x stainless steel fixing screws and support ring.
- PEX flexibles and M1/2" connections.
- Ø40mm ceramic cartridge.
- Flow rate pre-set at 5L/min at 300kPa.
- Thermal shocks are possible with this mixer tap.

MODELS

- DE2564T1** - Standard model 5L/min - 5 star WELS rating.
- DE2564T2** - Same as DE2564T1 but with H.160mm L.250mm spout.
- DE2564T3** - Same as DE2564T1 but with H.300mm L.160mm spout.
- DE2564T4** - Same as DE2564T1 but with H.300mm L.250mm spout.

