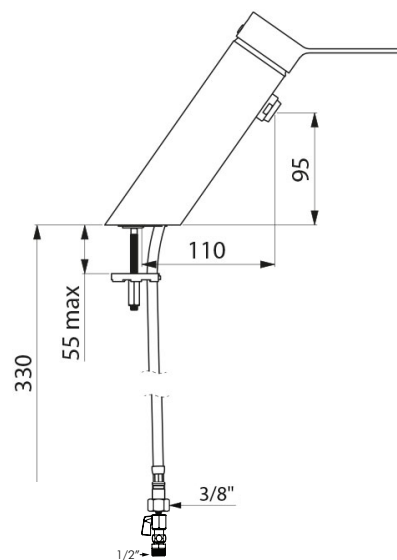


DE2621LF BIOSAFE BASIN MIXER - LEAD FREE*

DELABIE



DESCRIPTION

Delabie DE2621LF is a deck mounted mechanical basin mixer with solid control lever operation. Mixer body has smooth interior and low water volume (limits bacteria development). Temperature control and operation is on the lever control. Flow rate is pre-set at 4L/min. Operating pressure is 100-500kPa, 300kPa is recommended. Chrome-plated solid brass body with hygienic flow straightener and inlet M1/2" connections.

INSTALLATION

- Deck mounted through Ø34mm hole, with reinforced fixings.
- Maximum hygiene; no spout.
- Ø35mm Ceramic cartridge with pre-set maximum temperature limiter.
- Spout length L.110mm.
- 365mm PEX flexible 3/8" connector, supplied with 3/8" isolators and 3/8-1/2" adaptor.
- Maximum HW inlet temperature 70°C, we recommend ≤45°C to avoid scalding.
- Flow rate pre-set at 4L/min.
- Check compatibility of basin with this tap; the elongated base of tap may conflict with any basin that has a raised lip at the back.

MODELS

DE2621LF - Delabie Biosafe Basin Mixer, Includes 2x Stopcocks.

*'Lead free' has been defined as a plumbing product or material in contact with potable water that has a weighted average lead content of no more than 0.25%.



Auckland (Head Office)

20 Carr Rd, Three Kings
Auckland 1042
09 624 1115
sales@macdonaldindustries.co.nz
macdonaldindustries.co.nz

Christchurch

32B Hayton Road
Wigram, Christchurch
03 348 2356
christchurch@macdonaldindustries.co.nz

Wellington

04 569 8033