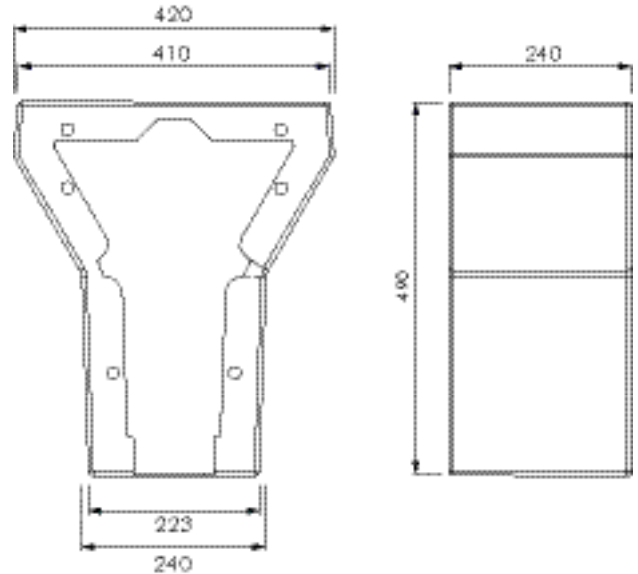
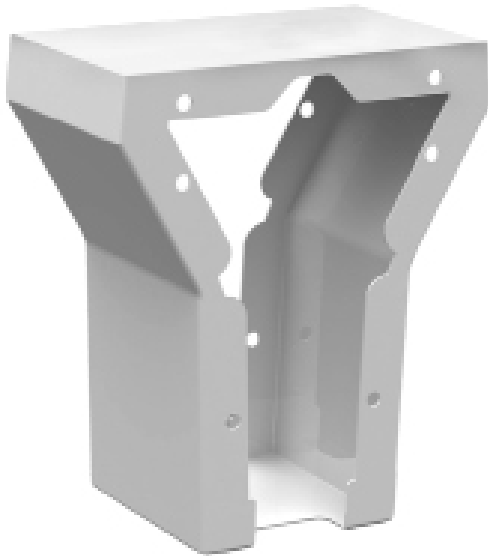


DV-VR01-012

TOILET EXTENSION BOX FOR ACCESSIBLE TOILET

KWC DVS



DESCRIPTION

Optional extra extension box for use with the DV-VR01-011 toilet pan. When used for accessible toilets this allows toilet to then be used in accordance with the NZS4121. Accessible toilets need to be between 700-750mm from the finished wall lining allowing for easier transition for people in a wheel-chair. Extension box made from stainless steel and finished in white enamel.

MODELS

DV-VR01-012 - Standard model as shown