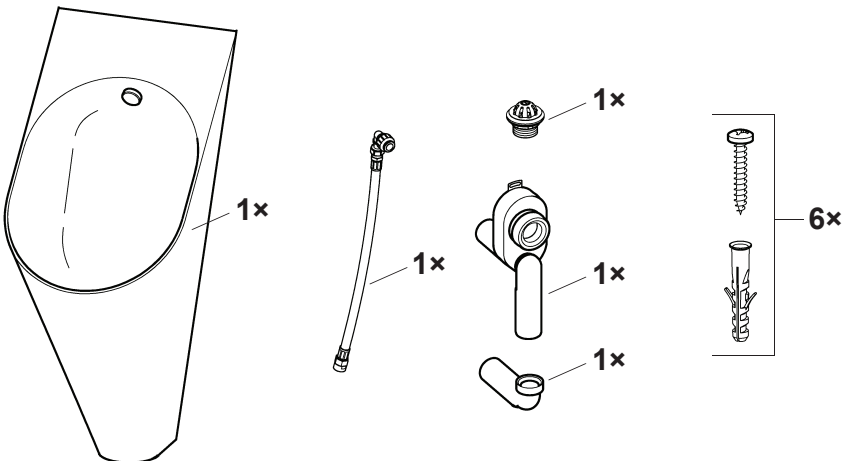


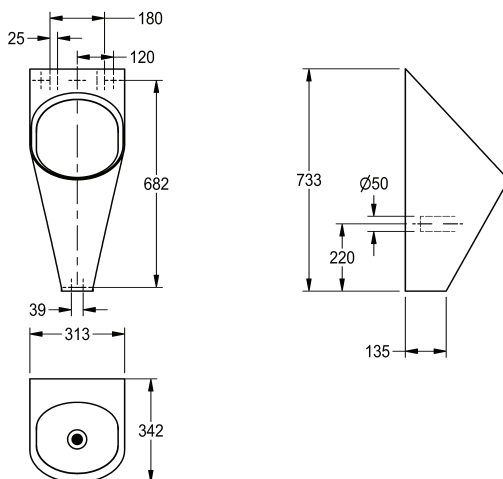
**FRANKE - FR-CMPX-538**  
STAINLESS STEEL POD URINAL



**CONTENTS**



## **WALL FIXING DIMENSIONS**



### **Important!**

Read and understand instructions before installation commences. Installation should only be completed by a suitably qualified plumber.

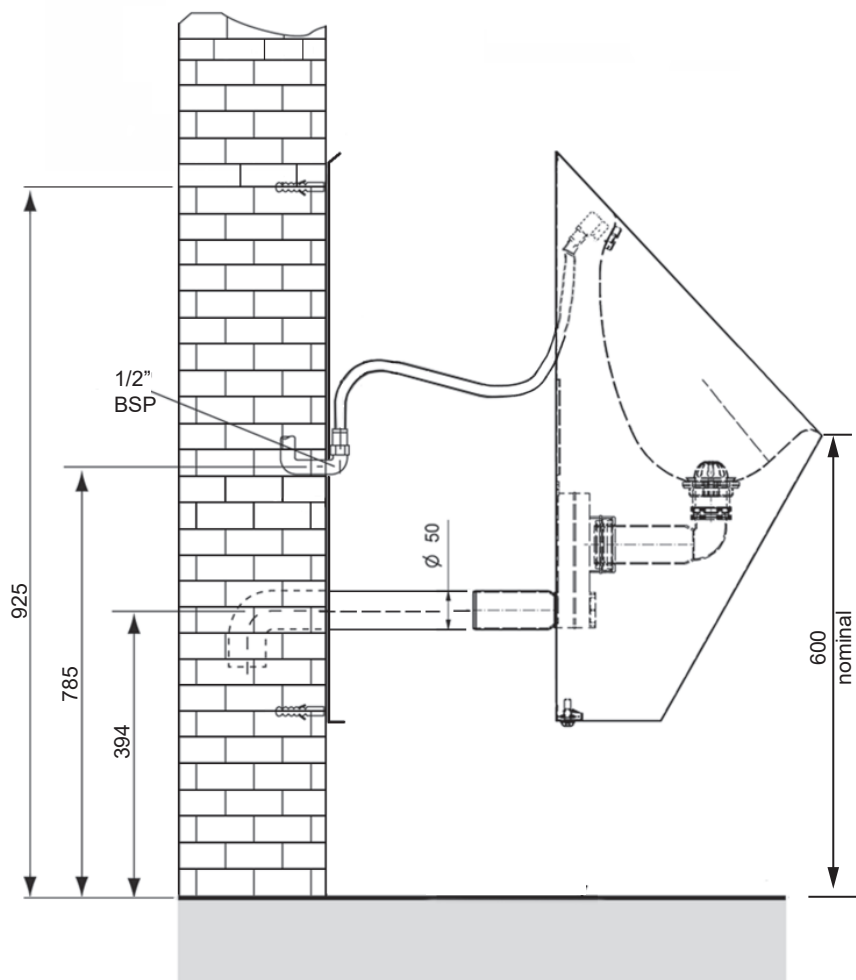
The mounting set supplied is suitable for use on brickwork, masonry or timber framed walls that are suitably nogged to the dimensions required for the mounting bracket.

## **CLEANING FRANKE URINALS**

We recommend that Franke urinals are NOT cleaned using chloric-, iodine-, or hydrochloric acid based fluids. Cleaners with the substances will destroy the surface and may cause rusting.

Citric acid based cleaners are a better solution.

MACDONALD INDUSTRIES LIMITED  
**INSTALLATION INSTRUCTIONS**

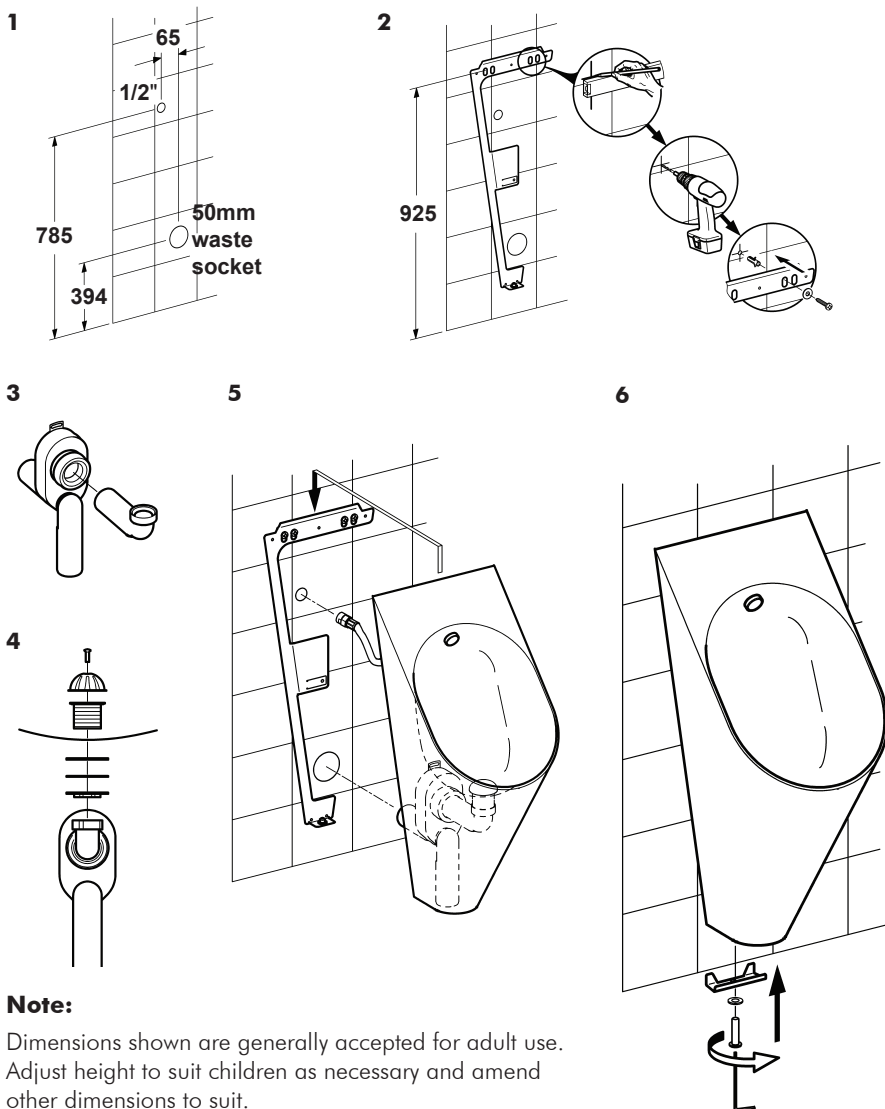


**Note:**

Dimensions shown are generally accepted for adult use.  
Adjust height to suit children as necessary and amend other dimensions to suit.

# MACDONALD INDUSTRIES LIMITED

## INSTALLATION INSTRUCTIONS



### Note:

Dimensions shown are generally accepted for adult use. Adjust height to suit children as necessary and amend other dimensions to suit.



**MACDONALD  
INDUSTRIES LIMITED**

### Auckland (Head Office)

20 Carr Rd, Three Kings

Auckland 1041

P: 09 624 1115

F: 09 624 1110

E: [sales@macdonaldindustries.co.nz](mailto:sales@macdonaldindustries.co.nz)

### Wellington

P: 04 569 8033

F: 04 569 8066

### Christchurch

P: 03 348 2356

F: 03 348 2376

[www.macdonaldindustries.co.nz](http://www.macdonaldindustries.co.nz)