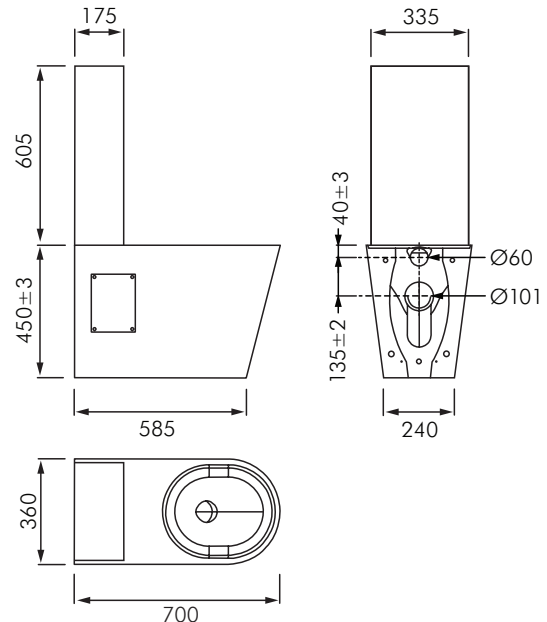


## FRFM5-ZHVP FLOOR MOUNTED WC & FLUSH VALVE



### DESCRIPTION

The Franke FRFM5-ZHVP is a disabled compliant back to wall WC and cistern tank suitable for installation in public buildings requiring a degree of vandal resistance. Suitable for use where there is no duct or cavity behind the WC which would normally allow for a concealed installation of the flush valve.

The flush valve provided is the proven Zurn ZH6152XL which is mounted behind a robust stainless steel cover, to which the hydraulic actuator is fitted. The flush valve is only available as a single 6L flush allowing a 1 Star WELS rating.

### INSTALLATION

The WC is screw fixed to wall/floor and the flush valve/cover is mounted on the wall behind the WC according to the instructions supplied with each WC.

The flush valve should be installed according to instructions supplied with the valve (see separate Tech Data Sheet) but pipe sizing and pressure requirements are critical to correct operation. Where pipe size and pressure is not available, choose the FRFM5-300VP which includes a Wisa cistern.

Supplied as standard P trap, it can be converted to S trap using a proprietary waste elbow.

Minimum Flow rates: 90L/min

Pressure: 100 - 500kPa dynamic (ideally 300-400kPa)

### MODELS

**FRFM5-ZHVP** - disabled compliant

**FRSP** - Grey plastic seat pads

**FRSW** - White seat and lid

**FRSB** - Black seat and lid

Also available in standard height to suit non disabled applications - refer FRFM4-ZHVP

