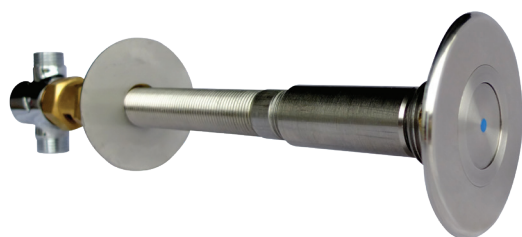


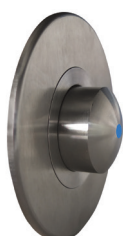
MS-747

THROUGH WALL TIMED FLOW CONTROL VALVE - TO SUIT HIGH SECURITY BASINS

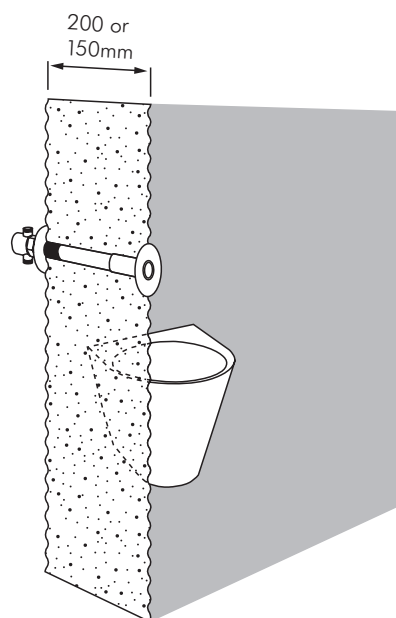
DELABIE



MS-747..



MS-747... -ACC



DESCRIPTION

A vandal resistant through wall water control which is designed to be installed where there is an accessible duct directly behind the basin.

- The valve set is supplied with a 75mm dia. escutcheon plate.
- Pressing the valve button initiates immediate water flow.
- On release of button water will stop flowing within 15 seconds.

Also available with an extended round headed button to suit accessible bathrooms.

INSTALLATION

- 1/2" BSP supply connection.
- Where required, mixed water is recommended to be tempered to $\sim 40^{\circ}\text{C}$ using a quality thermostatic mixing valve such as the Wilkins W19-1070.
- Available in three sizes to suit walls $\leq 150\text{mm}$ or $\leq 200\text{mm}$ thick, or without extension tubes for use through a panel.

The panel version is suitable when installed on the Franke combi extension box (ref. FRCM-EXT). The panel model is supplied without the escutcheon plate and when ordered as part of a set, extension box backsplash will be drilled to suit. Can be combined with a Zurn flush valve using the same button set, ref. ZH6152XL-VP.

MODELS

- MS-747-115 - To suit walls $\leq 150\text{mm}$
- MS-747-120 - To suit walls $\leq 200\text{mm}$
- MS-747-03 - To suit through panel installations

OPTION:

- MS-747...-ACC - With extended accessible button head



**MACDONALD
 INDUSTRIES LIMITED**

Auckland (Head Office)

20 Carr Rd, Three Kings
 Auckland 1041
 P: 09 624 1115
 F: 09 624 1110
 E: sales@macdonaldindustries.co.nz

Wellington

P: 04 569 8033
 F: 04 569 8066

Christchurch

P: 03 348 2356
 F: 03 348 2376