

Pedal operated valve or mixer,  
floor or wall mounted

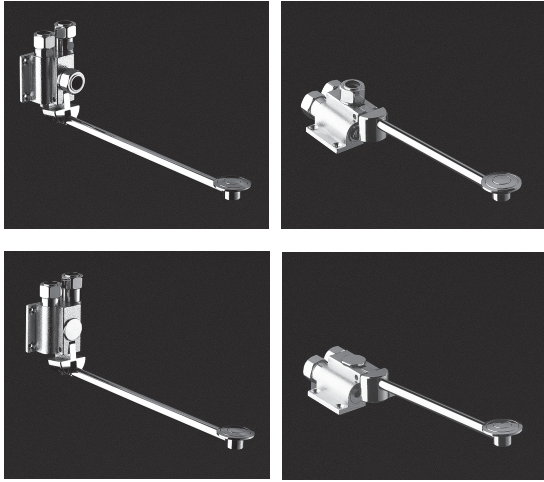


fig. 1

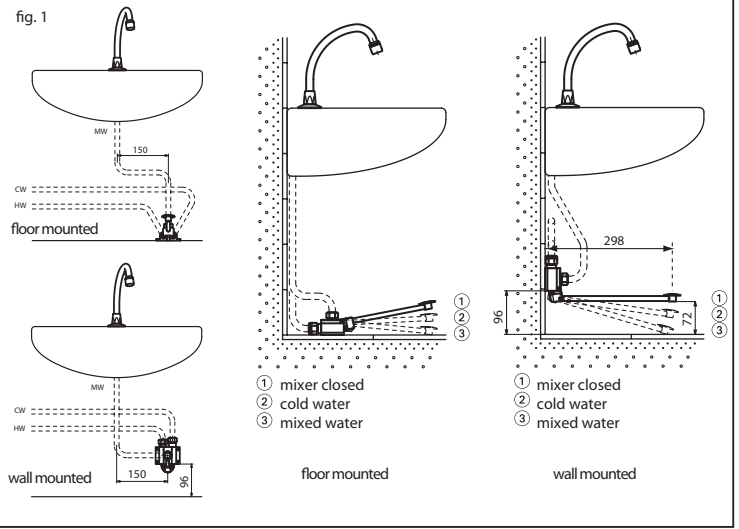
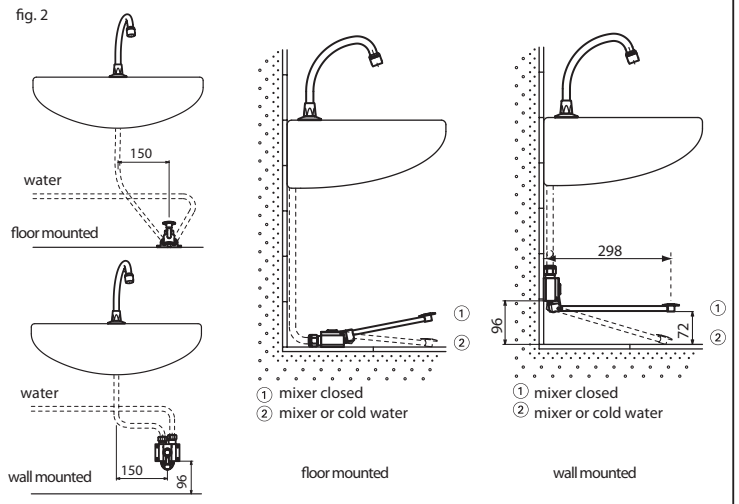


fig. 2



**FUNCTIONING**

GB

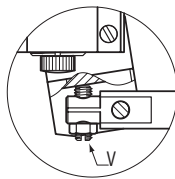
- Press the pedal to open water flow. Instantaneous automatic shut-off when the pedal is released. To avoid water-hammering when tap is closing, limit the pressure with a pressure reducer.
- **Mixer** : principle allows user to obtain cold and mixed water : Cold water by pressing the pedal up to middle position, and then mixed water when pressed at its maximum setting. Caution : the pedal must lean up the floor at maximum setting.

**INSTALLATION**

- Thoroughly flush the water supplies before connecting.
- **Mixer** : (fig. 1) supply with cold and hot water 60°C maxi (45°C recommended) and balance pressures ( $\Delta P < 1$  bar). Supply pressure : 10 bar maxi. (recommended : 0,5 - 5 bar).
- **Valve** : (fig. 2) supply with cold, or mixed water (37°C).
- Fix with 4 stainless steel screws.

**PEDAL ADJUSTMENT**

- Adjust pedal height by V screw in order the pedal be stopped on floor in maximum position.
- The pedal can be pulled up to clean the floor.

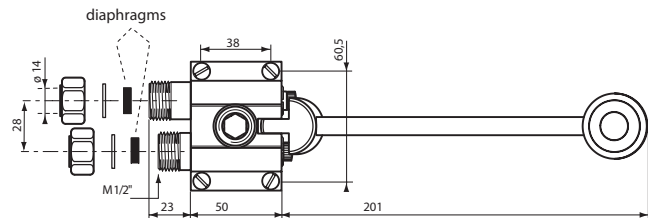


**FLOW RATE**

To avoid splashing and water-hammering, flow rate is limited by diaphragm(s) located in the inlet(s). In case of low pressure (1bar), put-off the diaphragm(s) in order to increase the flow rate.

**RECOMMENDATION :**

- Appropriate diameter of water supplying pipe avoids water hammering and pressure/flow rate losses (see table of calcul on our catalogue or website [www.delabie.com](http://www.delabie.com)).
- We recommend to protect the installation with filters, water hammer absorbers, pressure reducers in order to decrease the frequency of maintenance (recommended pressure from 0.5 to 5 bar maximum).
- Stop valves installed upstream connections are useful for servicing.



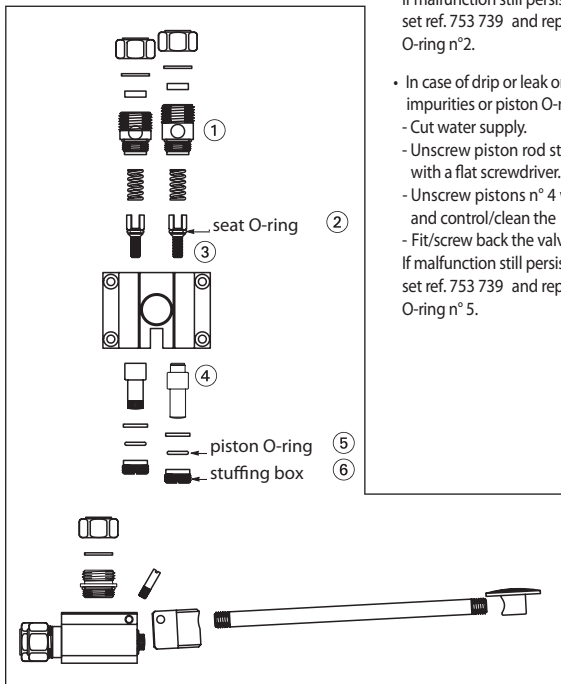
**CLEANING & SERVICING**

- **Chrome cleaning**  
The plated chrome must only be cleaned with soapy water and soft cloth. Never use abrasive or chlorine, or other chemical products.
- **Risk of freezing**  
Bled the pipes by operating several times the appliance in order to clear off the valve.

**MAINTENANCE**

GB

- Dirts coming from supply pipes can cause malfunctions :
- In case of drip or leak on **SPOUT** :  
- impurities or Seat O-ring cut (n°2)  
- Cut water supply.  
- Remove nipples n° 1 with a 6 mm Allen key.  
- Unscrew parts n° 3 with a flat screwdriver and control/clean the seat and O-rings n°2  
- Fit/screw back the valve and open water supply. If malfunction still persists, order the renovation set ref. 753 739 and replace parts n° 3, with O-ring n°2.
- In case of drip or leak on **PEDAL** :  
- impurities or piston O-ring cut (n°5)  
- Cut water supply.  
- Unscrew piston rod stuffing box n° 6 with a flat screwdriver.  
- Unscrew pistons n° 4 with a flat plier and control/clean the piston O-rings n° 5 .  
- Fit/screw back the valve and open water supply. If malfunction still persists, order the renovation set ref. 753 739 and replace whole piston with O-ring n° 5.



After Sales Care and Technical Support

Auckland: 09 624 1115 Wellington: 04 569 8033 Christchurch: 03 348 2356  
email : [tech@macdonaldindustries.co.nz](mailto:tech@macdonaldindustries.co.nz)  
web : [www.macdonaldindustries.co.nz](http://www.macdonaldindustries.co.nz)