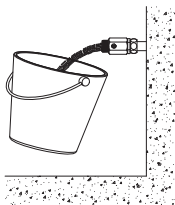


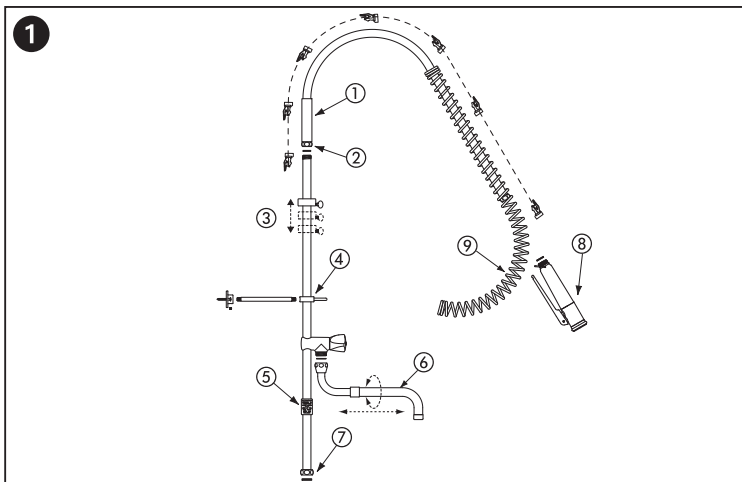


- GB** Pre-rinse sets with trigger-operated hand spray with or without bib tap

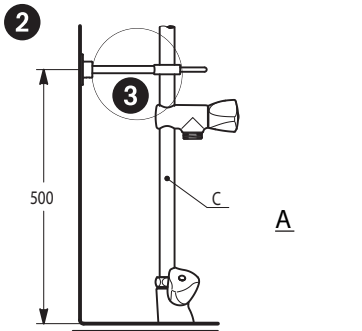


- GB** Thoroughly flush the pipes to remove any impurities before installing and commissioning the product.

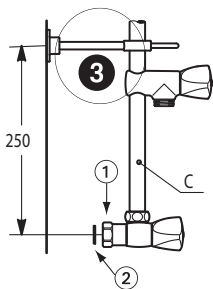




- GB** ① Reinforced flexible hose, to attach to the column / ② Anti-torsion, rotating nut / ③ Stainless steel spring guide for height adjustment / ④ Reinforced fixing bracket / ⑤ Information sticker: "Turn-off after use" / ⑥ Telescopic or S-shaped / ⑦ Rotating nut for fixing the column onto the valve / ⑧ Trigger-operated hand spray / ⑨ Spring (ensure that the spring direction is maintained).

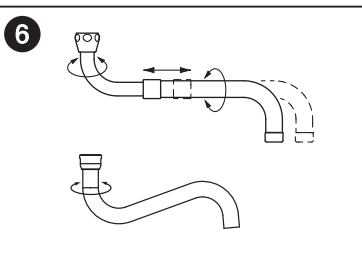
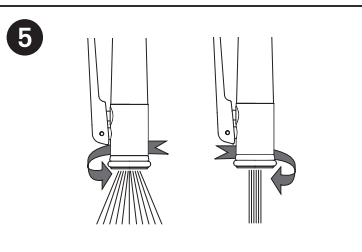
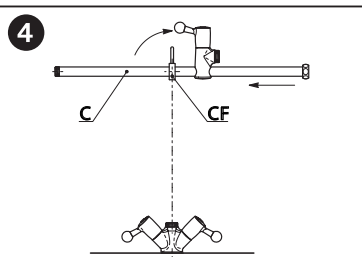
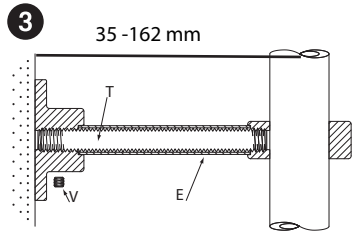


A



B

GB A : Deck-mounted / B : Wall-mounted



- Connect the mixer or tap
 - single hole mixers: deck-mounted drill hole $\varnothing 34\text{mm}$.
 - twin hole mixers: drill hole $\varnothing 22\text{mm}$.

Do not remove the non-return valves ②-① incorporated in flexible connectors (they are essential).

Fit the supplied filters as shown in the drawing ②-② in order to protect non-return valves.
- Position the fixing bracket at the height shown ②. Cut the threaded rod (T) to the desired length and adjust the chromed cross bar (E) accordingly ③.
- Tighten the screw (V) using a 2.5mm Allen key.
- Slide the column (C) horizontally through the fixing bracket (CF). Rotate the assembly through 90° and tighten the column onto the mixer/tap ④.
- Tighten the reinforced flexible hose onto the column using the rotating nut.
- Slide the spring over the flexible hose in the direction shown on the main diagram, starting with the straight section.
- Attach the trigger-operated hand spray to the end of the flexible hose. Adjust the height of the hand spray via the adjustable spring guide (see main diagram)
- Connect the hot and cold water, and balance the pressures ($\Delta P < 1 \text{ bar}$).

USE / OPERATION

- Maximum temperature of the hot water supply: 70°C .
- Turn off the mixer/tap after use to prevent the flexible hose remaining continually pressurised. An information sticker on the column repeats this recommendation.
- The pre-rinse set is supplied with a 95cm flexible hose ①. Longer hoses are available, if required, to avoid straining the hose: black hose L.120 cm (ref. 433120CH), or L.200 cm (ref. 433200CH); white hose L.120 cm (ref. 433120), or L.200 cm (ref. 433200).
- Spray options: Trigger-operated hand spray with adjustable jet by turning the nozzle at the end for a gentle spray or hard jet ⑤.
- Telescopic or fixed swivel spout depending on the model, see ⑥.

CLEANING & SERVICING

- Cleaning chrome :
Do not use abrasive, chlorine or any other acid-based cleaning products.
Clean with soapy water using a cloth or a sponge.
- Frost protection: Drain the pipes and operate the mixer several times to drain any remaining water.

REMEMBER :

- Our mixers/taps must be installed by professional installers in accordance with current regulations and recommendations in your country, and the specifications of the fluid engineer.
- Sizing the pipes correctly will avoid problems of flow rate, pressure loss and unwanted noise.
- Protect the installation with filters, water-hammer absorbers and pressure reducers to reduce the frequency of maintenance (recommended pressure from 0.8 to 5 bars maximum).
- Install stopcocks close to the mixer to facilitate maintenance.

After Sales Care and Technical Support:

Auckland: 09 624 1115 Wellington: 04 569 8033 Christchurch: 03 348 2356
 email: tech@macdonaldindustries.co.nz
 www.macdonaldindustries.co.nz