

INSTALLATION CISTERN TANK

- Cistern attaches to wall using a metal retaining plate and fixing screws
- Fit flush pipe to cistern and pan using pan connector supplied. Trim length of flush pipe to suit pan distance from the wall
- All RAK cisterns use Geberit fill and flush valves. Each cistern has specific Geberit instructions contained within the cistern.
- Disconnect water supply to cistern and flush line thoroughly to ensure no debris enters fill valve.
- Reconnect water and check flush.
- Each cistern is factory set to deliver a 6/3L flush. Flush volume can be adjusted by rotating the level screw on the inlet fill valve.

SPARES

- Cistern fill valve
 - Bottom inlet - RA-FS68I
- Cistern flush valve - RA-FS68F
- Toilet fixing kit - RA-FS37UK
- Soft close seat fixing kit - RA-BE1451HN

RA-BE1531

BELLA ACCESSIBLE LINK TOILET SUITE

RAK
CERAMICS



PACK INCLUDES

- RA-BE15300S link suite toilet
- RA-BE165000 wall mounted cistern tank
- RA-BE145100 seat and lid
- Fixing kit ref RA-FS37UK
- Installation Instructions
- Guarantee Form



MACDONALD
INDUSTRIES LIMITED

Auckland (Head Office)

20 Carr Rd, Three Kings
Auckland 1041
P: 09 624 1115
F: 09 624 1110

E: sales@macdonaldindustries.co.nz

Wellington

P: 04 569 8033
F: 04 569 8066

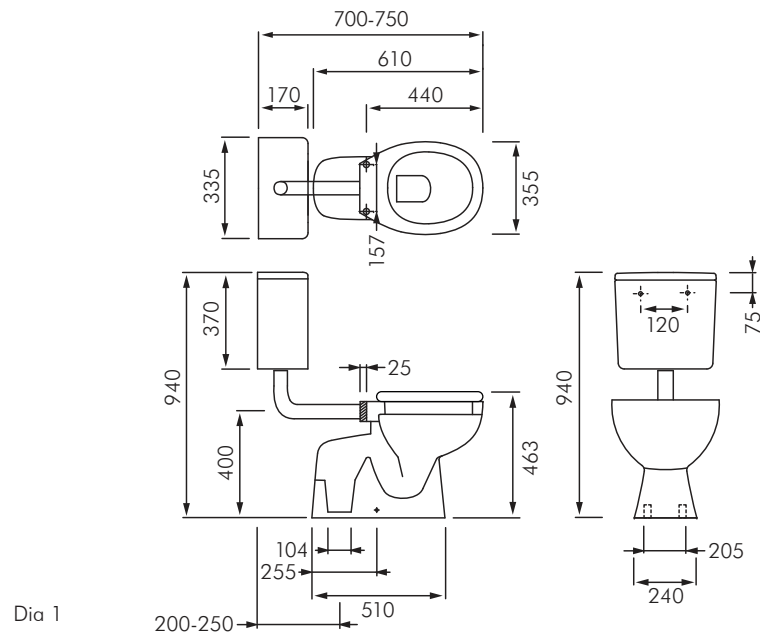
Christchurch

P: 03 348 2356
F: 03 348 2376

www.macdonaldindustries.co.nz

NOTES

- Inspect all items thoroughly immediately on receipt to ensure it meets your requirements.
- Inspect product for defects prior to installation. MacDonald Industries will not be responsible for any claims related to replacements after a product has been installed.
- Ensure floor on which toilet is to be installed is level and of a suitable material for installation of a toilet.
- Check water pressure does not exceed 500kPa. Fit pressure reducing valve if necessary.
- Check water inlet / waste outlet positions are correct for the toilet supplied according to the measurements in Dia. 1. Water inlet position at base of cistern, can be altered to suit LH or RH inlet.
- All measurements provided are based on finished wall/floor.
- Installation must only be completed by a registered plumber in accordance with AS/NZS3500 requirements.
- Only fix toilet's through floor mounting brackets supplied.
- Where floor is sloped bed the toilet using a sand and cement mixture or proprietary levelling compound.



INSTALLATION WC PAN

- Position toilet onto pan connector checking that pan is square to walls.
- Mark the position of fixing brackets on the floor and then remove toilet. **Do not use fixing holes as a guide for drilling as damage may occur.**
- Drill holes into floor as per Dia. 2 and fix mounting brackets.
- Ensure floor is clean of dirt, dust or impurities.
- Re-fit toilet securing it to the mounting brackets using sleeves/screws supplied.
- Fit chrome screw caps supplied.
- Apply a bead of flexible mould resistant silicon around base of pan.

