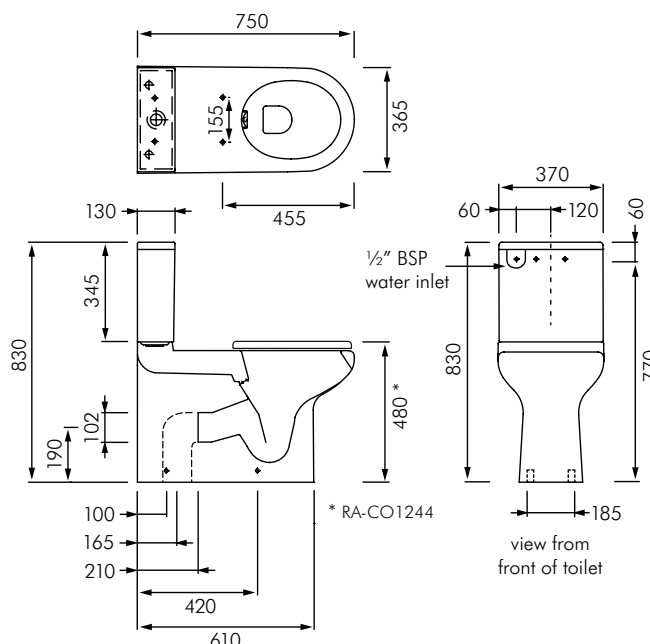


RA-CO1244 / 45

COMPACT ACCESSIBLE WALL FACED TOILET SUITE

RAK
CERAMICS



DESCRIPTION

The Compact accessible toilet range has been created to provide comfortable convenience to people with additional needs. Apart from its broad dimensions, Compact accessible toilets also come standard with Rimless technology which delivers the ultimate in hygienic flushing. Rimless technology ensures water is fully projected around the front of the toilet pan giving a completely clean flush. Rimless flushing makes it easier to clean and reduces bacteria and dirt by more than 90%.

When used with the soft close seat and lid, the Compact suite meets the requirements of AS1428.1:2009 as being suitable for use in disabled bathrooms.

Compact accessible is available in wall faced toilet suite (as shown), wall faced toilet pan or wall hung toilet pan formats.

Colour: Alpine white only.

Trap type: P-trap or S-trap outlet connections.

Cistern: 6/3L dual flush, fitted directly to toilet pan with concealed fixings.

Inlet: 1/2" BSP concealed back inlet connection (remote isolation valve included).

Water pressure range: 10-1000kPa (50-500kPa recommended).

Fixing: FS37UK floor fixing kit included (x2).

Seat: Compact urea soft-close toilet seat & lid, also available without lid.

Dimensions: All dimensions in mm. Tolerance $\pm 5\%$ for below 200mm and $\pm 3\%$ above 200mm.

MODELS

AS1428.1:2009 compliant:

RA-CO1244P - RAK Compact accessible toilet suite P-trap complete with soft-close toilet seat & lid.

RA-CO1244S - RAK Compact accessible toilet suite S-trap complete with soft-close toilet seat & lid.

AS1428.1:2009 non-compliant:

RA-CO1245P - RAK Compact accessible toilet suite P-trap complete with care toilet seat (no lid).

RA-CO1245S - RAK Compact accessible toilet suite S-trap complete with care toilet seat (no lid).

Optional extra:

For a back rest offering extra comfort, refer MacDonald BE-BT35 in separate literature.

RA-ACC-BL - Blue raised Button

RA-ACC-WH - White raised button

