

RA-CO1344 & 1345
COMPACT ACCESSIBLE
WALL HUNG TOILET PAN

RAK
CERAMICS



RA-CO1345 shown

PACK INCLUDES

- RA-CO13400P 700mm long wall hung toilet
- RA-CO145400 soft close Urea seat & lid (if ordered as a RA-CO1344)
- RA-CO145500 Care seat only (Model RA-CO1345)
- Installation Instructions
- Guarantee Form

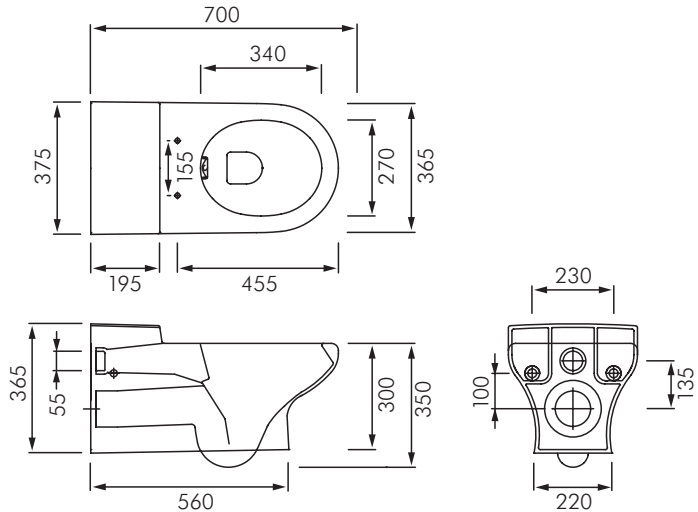
OPTIONS

- Inwall mounting bracket - ref RA-WHB



NOTES

- Inspect all items thoroughly immediately on receipt to ensure it meets your requirements.
- Inspect product for defects prior to installation. MacDonald Industries will not be responsible for any claims related to replacements after a product has been installed.
- Ensure wall support bracket has been installed to the correct height as required to meet the contract specification and NZ Building Code G1
- Check water pressure does not exceed 500kPa. Fit pressure reducing valve if necessary.
- Check water inlet / waste outlet positions are correct for the toilet supplied according to the measurements in Dia. 1
- All measurements provided are based on finished wall/floor.
- Installation must only be completed by a registered plumber in accordance with AS/NZS3500 requirements.
- Correct wall support for any wall hung toilet is essential and is totally the responsibility of the contractor. MacDonald Industries will not accept any claim for damages caused by inadequate wall structures or support for the toilet.



Dia 1

PRE-LINING INSTALLATION

- Fit wall bracket according to manufacturers instructions ensuring the through wall fixing bolts are set to a height to allow the pan to meet the height required for the contract. Please note there is a 10mm difference between the RA-CO1344 and RA-CO1345. Ensure the bracket mounting height achieves the required height to meet the appropriate Standard.
- Ensure through wall bolts are at the correct spacing to suit the toilet mounting holes.
- Complete installation of inwall cistern or flushing valve to manufacturers specification allowing the horizontal pipe to extend sufficiently to meet the pan horn.

POST-LINING INSTALLATION

- Trim horizontal flush pipe as necessary and fit Kee seal.
- If mounting frame is supplied with tile insulation panel, fit to wall.
- Slide toilet onto fixing bolts and water/waste pipes, tighten nuts and fit covers.
- Trim around tile insulation panel with sharp craft knife.
- Apply bead of flexible mould resist and silicon around toilet.
- Where inwall cistern has been used, flush line thoroughly before final connection to cistern according to manufacturers instructions.
- Where inwall flush valve has been installed, remove internals of flush valve and open stop cock to flush debris/air from flushing line for at least 1 minute, reassemble and test flush.

SPARES

- Toilet fixing kit - RA-GL08K
- Soft close urea seat fixing kit - RA-CO1454HN



**MACDONALD
INDUSTRIES LIMITED**

Auckland (Head Office)

20 Carr Rd, Three Kings

Auckland 1041

P: 09 624 1115

F: 09 624 1110

E: sales@macdonaldindustries.co.nz

Wellington

P: 04 569 8033

F: 04 569 8066

Christchurch

P: 03 348 2356

F: 03 348 2376

www.macdonaldindustries.co.nz