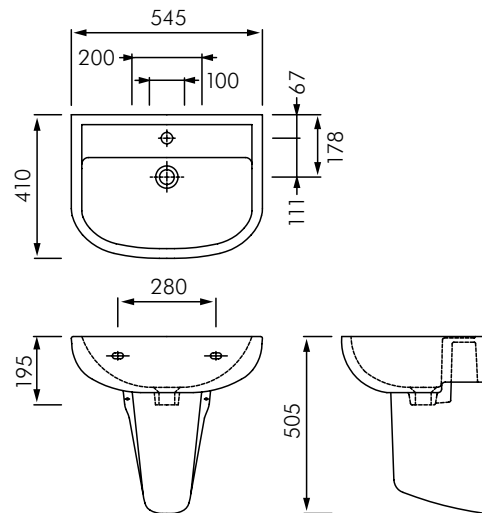


## RA-CO2100HP55 COMPACT MEDICAL WALL HUNG BASIN

**RAK**  
CERAMICS



### DESCRIPTION

The Compact medical basin range have slender dimensions and suit healthcare facilities where no overflow is required and comes in options with or without tap hole. The Horizontal outlet basin is the ultimate in basin hygiene as the waste has no stagnant water and with the added advantage of concealing the waste pipe & fixings.

Compact medical is available in 450mm, 500mm, 550mm basins, 380mm and 500mm horizontal basins, and 510mm, all available with or without tap hole.

**Colour:** Alpine white only.

**Tap holes:** No tap hole, 1 tap hole.

**Waste outlet:** For 32mm waste (not included). Refer separate literature for waste and trap options.

**Basin size:** 545 x 410mm.

**Overflow:** No overflow only.

**Fixing:** FS31SL wall fixing kit included.

**Dimensions:** All dimensions in mm. Tolerance  $\pm 5\%$  for below 200mm and  $\pm 3\%$  above 200mm.

### MODELS

**RA-CO2100HP55** - RAK Compact 550 wall hung basin without overflow, no tap hole.

**RA-CO2110HP55** - RAK Compact 550 wall hung basin without overflow, 1 tap hole.

**RA-CO2100HP45** - RAK Compact 450 wall hung basin without overflow, no tap hole.

**RA-CO2110HP45** - RAK Compact 450 wall hung basin without overflow, 1 tap hole.