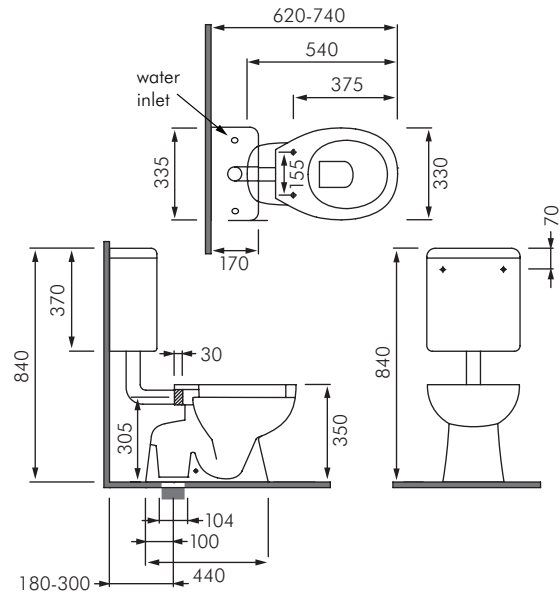


## RA-LE1513 LENA CHILD LINK TOILET SUITE

**RAK**  
CERAMICS



### DESCRIPTION

The Lena Child bathroom suite has been designed exclusively with children in mind. It has broad curved projections to ensure safety and is the perfect height for children.

**Colour:** Alpine white only.

**Trap type:** S-trap outlet connection.

**Cistern:** Ceramic 4.5/3L dual flush, fitted to the wall.

**Inlet:** 1/2" BSP bottom inlet connection (isolation valve not included).

**Water pressure range:** 10-1000kPa (50-500kPa recommended).

**Fixing:** FS37UK floor fixing kit included.

**Seats:** Bambi Plus urea toilet seat and lid.  
Sanit child seat only (nolid).

**Dimensions:** All dimensions in mm. Tolerance  $\pm 5\%$  for below 200mm and  $\pm 3\%$  above 200mm.

### MODELS

**RA-LE1513** - RAK Lena Child link toilet suite S-trap complete with Bambi Plus toilet seat and lid.

**RA-LE1515** - RAK Lena Child link toilet suite S-trap with toilet seat only (no lid.)



#### Auckland (Head Office)

20 Carr Rd, Three Kings  
Auckland 1042  
09 624 1115  
sales@macdonaldindustries.co.nz  
www.macdonaldindustries.co.nz

#### Christchurch

03 348 2356  
christchurch@macdonaldindustries.co.nz

#### Wellington

04 569 8033