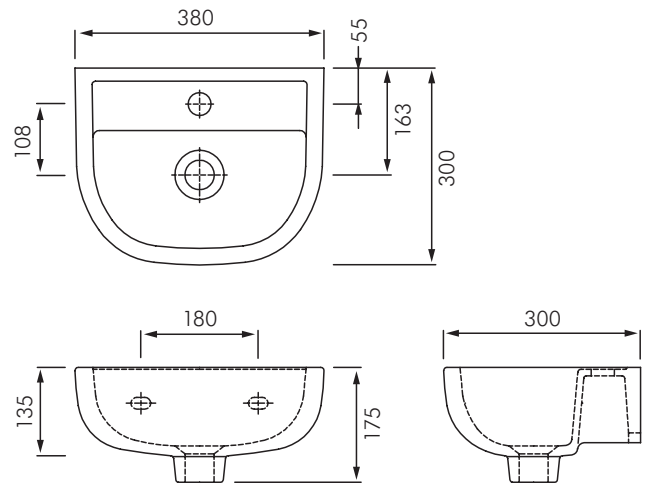


RA-LE2110

LENA CHILD WALL HUNG BASIN

RAK
CERAMICS



DESCRIPTION

The Lena Child basin has been designed exclusively with children in mind. It has broad curved projections to ensure safety and is the perfect height for children.

Lena Child is complimentary to the Junior wall faced toilet pan ref RA-JU1113.

Colour: Alpine white only.

Tap holes: 1 tap hole.

Waste outlet: For 32mm waste (not included). Refer separate literature for waste and trap options.

Basin size: 380 x 300mm.

Overflow: No overflow only.

Fixing: FS31SL wall fixing kit included.

Dimensions: All dimensions in mm. Tolerance $\pm 5\%$ for below 200mm and $\pm 3\%$ above 200mm.

MODELS

RA-LE2110 - RAK Lena Child wall hung basin without overflow, 1 tap hole.



MACDONALD
INDUSTRIES LIMITED

Auckland (Head Office)

20 Carr Rd, Three Kings

Auckland 1042

P: 09 624 1115

F: 09 624 1110

E: sales@macdonaldindustries.co.nz

Wellington

P: 04 569 8033

F: 04 569 8066

Christchurch

P: 03 348 2356

F: 03 348 2376

www.macdonaldindustries.co.nz