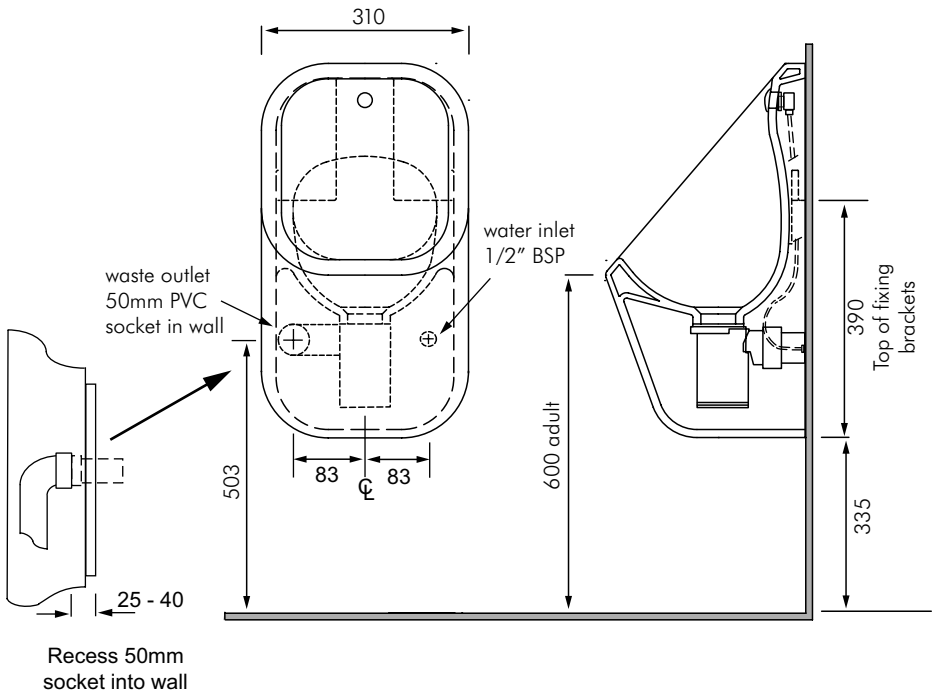


RA-SE3100
SERIES 600 WALL HUNG URINAL

RAK
CERAMICS



PRE LINING

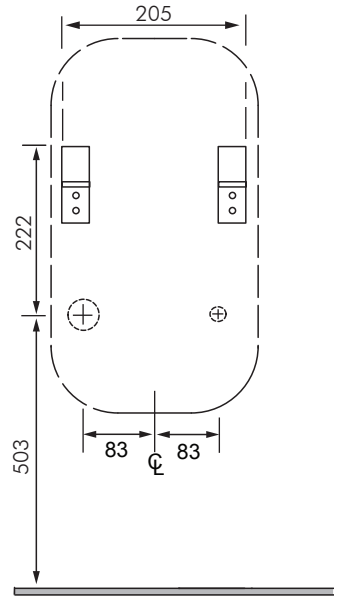
Ideal pressure range: 100 - 500kPa

Pipe up to urinals according to the drawings (pg 1 and right) to suit the model of Series urinal supplied and to suit the flushing system specified. Dimensions shown are based on urinal being installed for adults, adjust height dimensions if urinal is lowered for children (nominal 200mm).

Walls should be nogged to suit fixing bracket positions shown.

Carefully check what each urinal flush valve is supplied with as this can vary from product to product.

Waste trap supplied with each urinal requires a **50mm PVC socket** be fitted inside the wall in the outlet position shown. **Socket must be recessed between 25 and 40mm from finished face wall.**

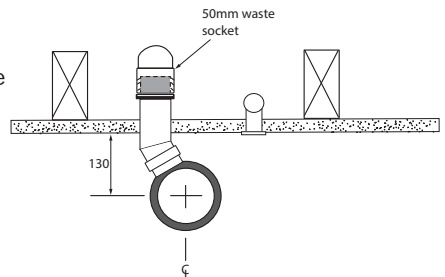


POST LINING

Fix wall mounting brackets to wall in required position.

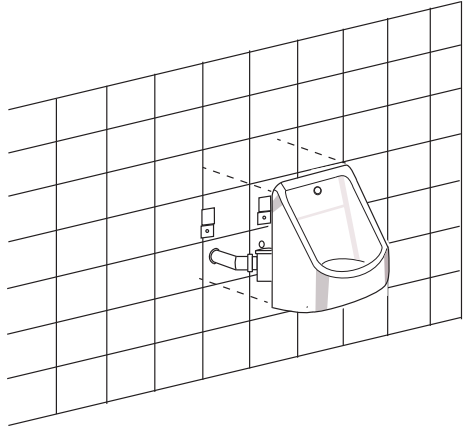
Assemble sparge and tubing as per drawing (right). Sparge is supplied with a 600mm length of tubing allowing connection to the wingback in the wall. Connect inlet tubing to wingback.

Waste trap is supplied with a rubber keeseal which must be fitted to outlet of trap. Assemble waste trap, removing the chrome cover, tube, and threaded insert. Push the waste trap outlet into the 50mm PVC socket. Some trimming of waste trap outlet may be needed to suit the position of the 50mm socket prior to fitting to ensure the waste trap is positioned ~ 130mm from face wall and centred on the urinal position.

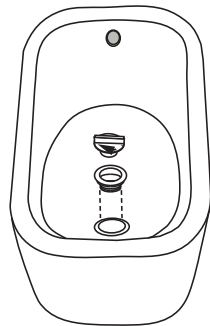


POST LINING (CONT)

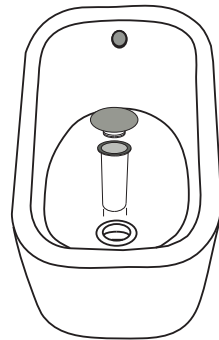
Connect inlet tube to wingback and present urinal over wall brackets, ensuring inlet tube is not kinked. Waste trap should line up with outlet hole in urinal.



Fit threaded waste insert using tightening tool supplied (see right)



Slide waste tube into outlet fitting and fit chrome cover into tube (see right)



Once all connections have been made and flushing valve is working correctly, apply bead of white silicon around urinal to achieve seal to wall.

FLUSHING VALVES

There are many varieties of flushing valves and those listed below are examples of those offered by MacDonald Industries Ltd, suitable for use with the Series 600 urinals. For details on each type refer appropriate Tech Data Sheet.

RA-SE3100

Delabie recess mounted timed flow flush valves. Connection from valve to inlet connector by plumber:

DE777 130 - Temposoft flush valve with 130dia escutcheon plate.
1L flush adjustable.

DE779 128 - Tempostop flush valve with 130dia escutcheon plate.
1L flush adjustable.

RAK recess mounted electronic flush valve:

RA-FS10-6V - Sensor activate flush valve, battery powered. Automatically flushes urinal after use. 1L adjustable.

RA-FS10-230V - As above but with 230V/6V power supply. 230V electrical connection by electrician.

NOTE: RAK electronic flush valves are supplied with an outlet pipe and 1/2" BSP connection which will need to be discarded to complete the installation of the Series urinal.



**MACDONALD
INDUSTRIES LIMITED**

Auckland (Head Office)

20 Carr Rd, Three Kings

Auckland 1042

P: 09 624 1115

F: 09 624 1110

E: sales@macdonaldindustries.co.nz

Wellington

P: 04 569 8033

F: 04 569 8066

Christchurch

P: 03 348 2356

F: 03 348 2376

www.macdonaldindustries.co.nz