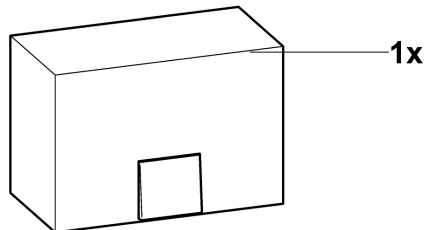
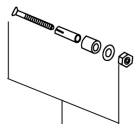
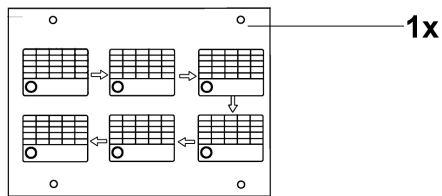
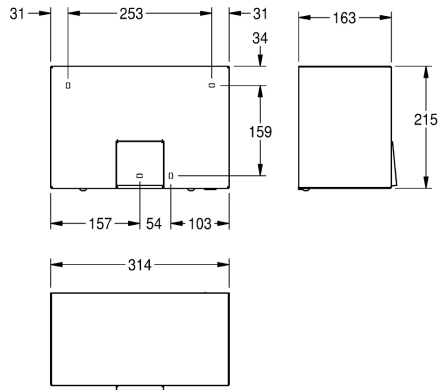


FRANKE - RODX310

RODAN HOT AIR HAND DRYER



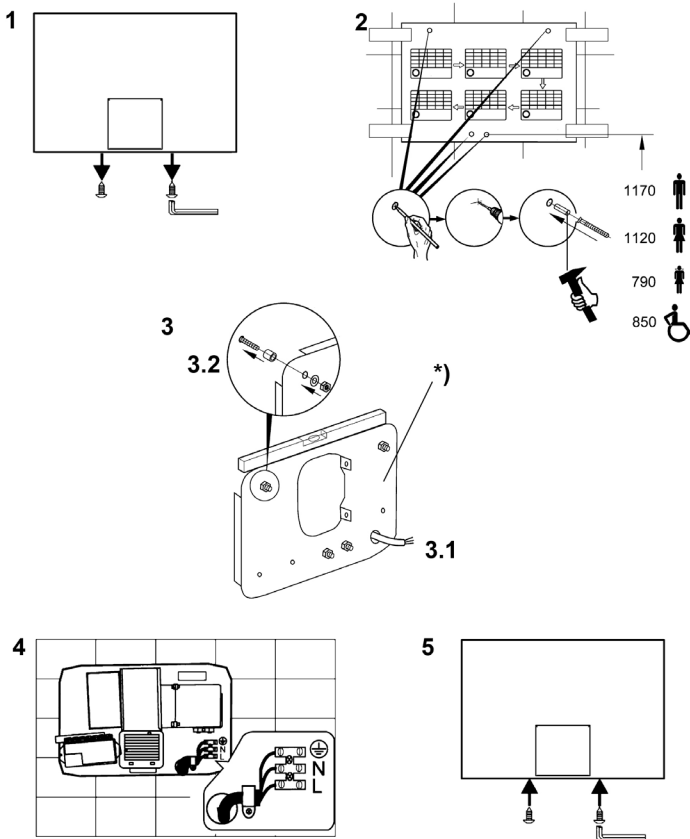
IMPORTANT NOTES

Installation, commissioning and maintenance are to be performed only by a qualified electrician according to local regulations. All technical connection regulations specified by the local water and electricity supply utility companies must be complied with.

TECHNICAL DATA

Operating voltage 230 V ~
Performance overall 2200 W
Heating 2100 W
Motor 100 W
Air quantity 274 m³/h
Air speed 15,5 m/s

INSTALLATION

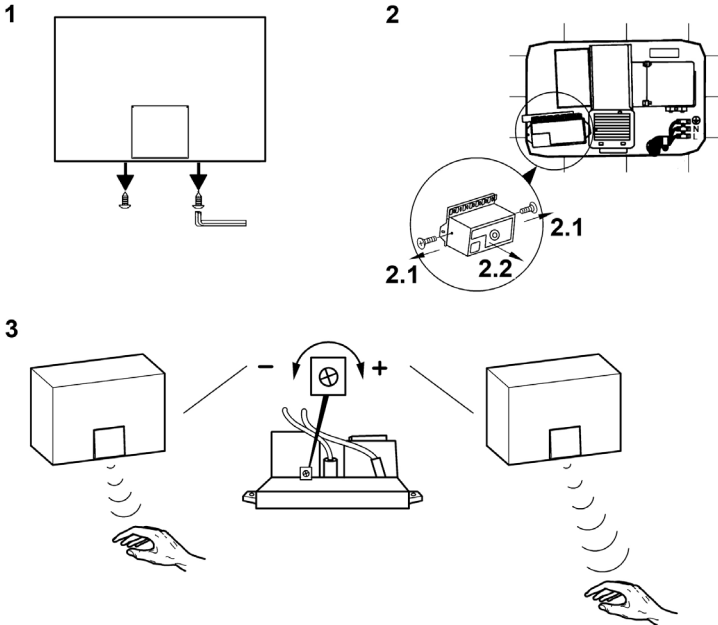


MACDONALD INDUSTRIES LIMITED INSTALLATION INSTRUCTIONS

WARNING

Include the device in the list of electrical equipment destined for periodic checking. To prevent the device from overheating or losing flow power, regularly clean it taking into account the level of usage and the amount of contamination in its operating environment. Before opening the device, disconnect it from the mains supply. Failure to observe can mean risk of death or material damage, e.g. from electric shock or fire.

SET THE RANGE



CITCUIT DIAGRAM

