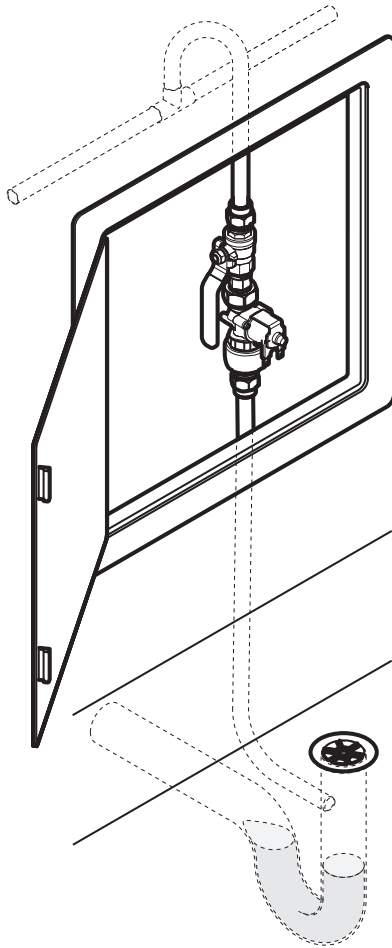


SL-TP
ELECTRONIC TRAP PRIMER

mi SOLO



DESCRIPTION

The SOLO electronic trap primer is a means of maintaining a seal in floor wastes, gully traps or shower wastes where there is a likelihood of trap dryout due to long periods of inactivity or where ventilation of air-conditioning systems speed the natural drying process.

Parts Supplied

The MacDonald Model SL-TP is supplied as a kitset including:

- 3/4" 6Vdc latching coil solenoid valve
- SOLO electronic control module
- 1/2" M/F isolating ball valve c/w union fitting
- 2L/min flow regulator (inserted into backflow inlet)
- 3/4" M/F Vacuum breaker backflow preventer
- 1 m solenoid extension cable
- SOLO 6v DC power pack with 1.8m lead

INSTALLATION

Electrician

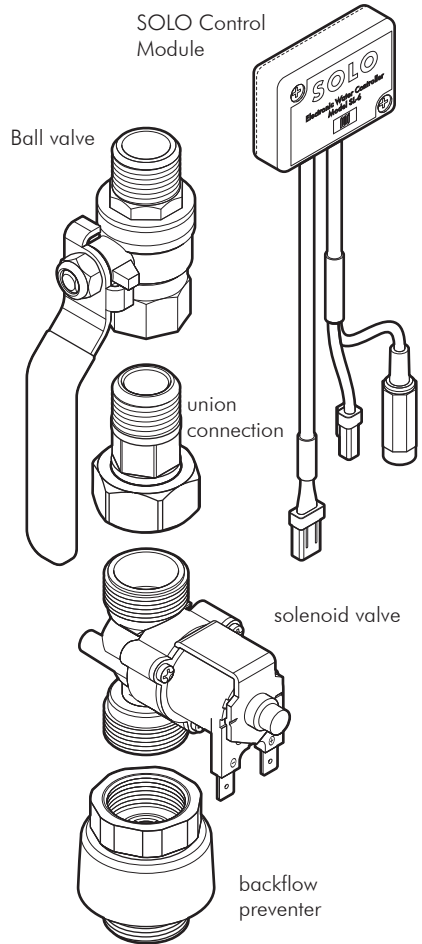
The electrician should provide a 230Vac GPO immediately adjacent to the Control Module mounting position. Power should be provided via an independent circuit breaker to ensure continuity of supply.

Plumber

The parts should be assembled on site by the installing plumber in the order as shown in the diagram (right). Ensure the backflow preventer and the flow regulator are installed vertically. Once completed check for leaking joints. All joints should be completed using proprietary hemp, tape or liquid sealant. Do not overtighten joints.

The backflow preventer provides the necessary separation to comply with Building Act Acceptable Solutions AS1/G1, ensure there is a minimum distance of 300mm between the backflow preventer and the FFL or drain (whichever is the higher). It is fitted with a 2l/min flow regulator to minimise flow.

Once all plumbing has been completed connect cables from control module to solenoid and connect power cable to control module.



INSTALLATION (CONT)

There are two wiring looms on the control module;

- 1) power input connector for connection to the 6Vdc power pack lead.
- 2) power output lead for connection to the solenoid valve. Ensure water flows through the solenoid valve in the direction of the arrow on the base. The lead is terminated with 2 x large Faston quick connect terminals that are colour matched to the terminals on the solenoid valve. **Blue** connector fixes to + terminal, **White** connector fixes to - terminal.

The solenoid valve assembly should be mounted within 1m of the Control Module. Longer cables are available on special request.

The Control Module has a removable cover which reveals a set of 8 DIP switches (as per below). Remove cover a set switches to allow sufficient water to pass to maintain the required trap seal. The trap primer is designed to be installed on a mains pressure water supply. It is recommended that it be positioned as close as practical to the trap which it serves.

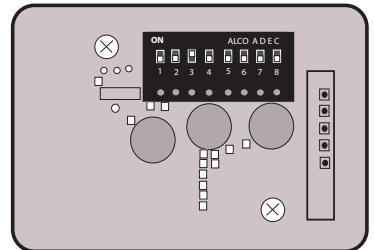
Never install in a position which does not have adequate ventilation or that is exposed to the weather. All piping to and from the trap primer is to be completed by the plumber to suit the plumbing layout and the engineers specification.

Timer Adjustments

The SOLO SL-TP trap primer has two setting options - run time and cycle time. Switches 1,2 & 3 adjust the run time. Switches 4,5 & 6 the cycle time. Switches 7 & 8 allow all run and cycle times to be doubled if required.

See chart below for options.

SL-TP trap primer will be supplied preset to the switch settings marked *. Adjust as required.



▲ ON * pre-set
 ▼ OFF

Test Function

As a test function, SL-TP will commence a flush cycle (RUN time) 4 seconds after power up, then will proceed to a CYCLE time.

Run Time

1	2	3	Time (sec)	Flush Volume (l)
▼	▼	▼	0.5	.016
▲	▼	▼	1	.033
▼	▲	▼	2	.066
▲	▲	▼	3.5	.116
▼	▼	▲	5	.166 *
▲	▼	▲	10	.333
▼	▲	▲	20	.666
▲	▲	▲	30	1.000

Cycle Time

4	5	6	Time (hrs)
▼	▼	▼	1
▲	▼	▼	2
▼	▲	▼	3
▲	▲	▼	4
▼	▼	▲	6
▲	▼	▲	8
▼	▲	▲	12 *
▲	▲	▲	24

Extended Run Time

Switch 7	Function
▼	Normal *
▲	2 x

Extended Cycle

Switch 8	Function
▼	Normal *
▲	2 x

SPECIFICATION

Solenoid Voltage: 6Vdc

Pressure Range: 100 - 500kPa (recommended 300kPa)

Operating Temperature: 2 - 60oC

Inlet Connection: 1/2" BSP

Outlet Connection: 3/4" BSP

SPARES

Control Module - SL-CM-TP

Solenoid Valve - RP6115-6-LC

Power pack - SL-PP6

HANDI-ACCESS PANELS

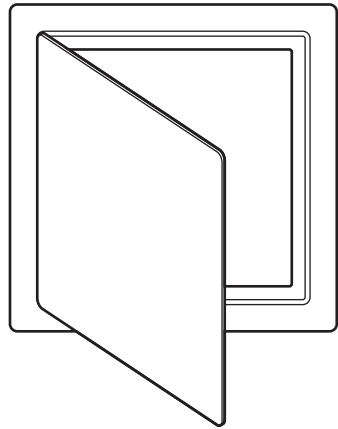
If you are installing the SOLO electronic trap primer in a wall cavity or ceiling, you will need to provide access to the valve for servicing purposes.

MacDonald Industries Ltd offers a full range of access panels from simple plastic panels such as:

KAHA88 - 200 x 200 or

KAHA1414 - 350 x 350

through to large metal panels with optional stopping bead edge. Ask any of our sales staff for information to suit your contract.



**MACDONALD
INDUSTRIES LIMITED**

Auckland (Head Office)

20 Carr Rd, Three Kings
Auckland 1041
09 624 1115
sales@macdonaldindustries.co.nz
macdonaldindustries.co.nz

Christchurch

32B Hayton Road
Wigram, Christchurch
03 348 2356
christchurch@macdonaldindustries.co.nz

Wellington

04 569 8033