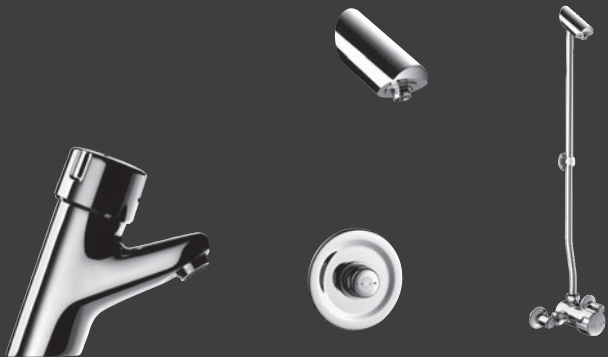
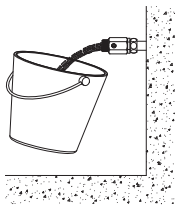
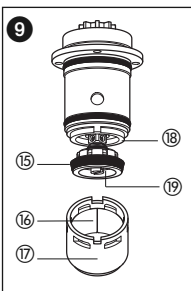
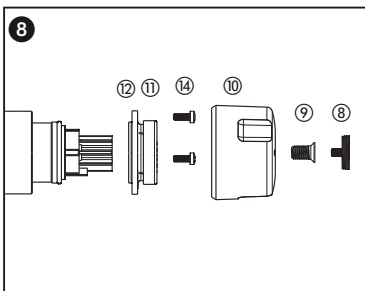
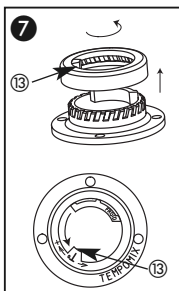
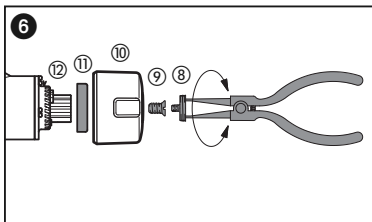
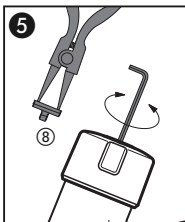
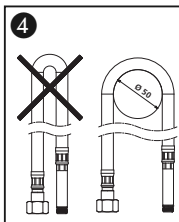
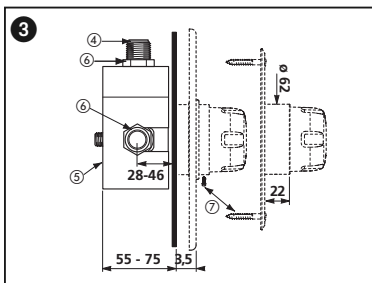
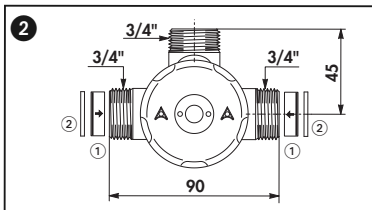
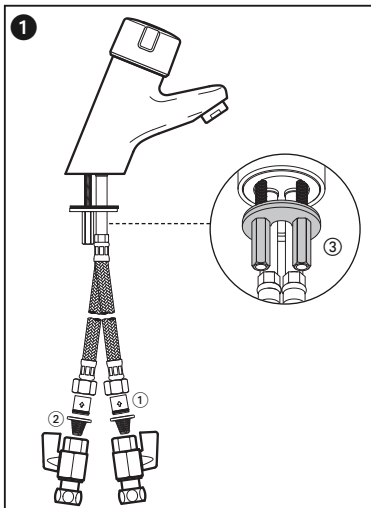


**GB** Time flow mixer for washbasins or showers



**GB** Thoroughly flush the pipes to remove any impurities





## OPERATION

- Press the push-button control to open the valve.
- Rotate the push-button control to select the desired temperature.
- Automatic shut-off after ~20 seconds for washbasins and ~30 seconds for showers (+5/-10 at 3 bar, according to the European Standard EN 816).

## INSTALLATION

- Under no circumstances should the non-return valves ① (figs. ①, ②) be removed from the water inlets.
- Install the filter joints ② (figs. ①, ②) supplied exactly as shown in the diagram . They will protect the non-return valves from damage.
- Supply with cold water and hot water at a maximum temperature of 50°C, and balance the pressure between the hot and cold water (  $\Delta P < 1$  bar). Ensure that hot water is always delivered from the left side and cold from the right. Maximum supply pressure is 10 bar (we recommend 1 to 5 bar dynamic pressure). Take care not to pinch the PEX flexibles (fig. ④).

### Washbasins

- Use the DELABIE elbow connectors ref. 836020 or 838020 for installations with 150mm centres.

### Deck-mounted Washbasins

- 34mm diameter hole for installation.
- Mount the body of the mixer on the washbasin and tighten the nuts ③ (fig. ①) on the fixing plate.
- Ensure a waterproof seal between the mixer and the work plan that is appropriate for the type of installation.

### Recessed Showers (fig. ③)

- The wall mounting area should measure: 130 x 110mm, with an adjustable depth of 55-75mm.
- Attach the connectors ④ to the recessing box ⑤ using the back-nuts ⑥ and position the mixer at the desired height.
- Remove the mixer. Weld/solder the cold water inlet, hot water inlet and mixed water outlet to the Ø14 or Ø15 copper tubes, depending on the model.
- Seal the boxed unit ⑤ and welded/soldered joints.
- Connect the mixer to the connectors ④ with F3/4" nuts.
- Position the wall plate against the wall using the self-adhesive foam seal, with the vent/drain at the bottom:
  - Tighten the Ø195 wall plate with the screw ⑦ using a 2.5mm Allen key;
  - Or tighten the 160 x 160mm or 300 x 300mm wall plate with the 4 screws (4 x 35) supplied.
- For stainless steel wall plate version: position the silicone washer behind the wall plate to ensure a water tight seal between the wall plate and the wall. Leave a vent/drain at the bottom to allow any residual water to drain away.

### IT IS THE INSTALLER'S RESPONSIBILITY TO:

- ENSURE THAT THE RECESSED MOUNTING BOX IS WATERTIGHT TO PREVENT ANY WATER INGRESS INTO THE INSTALLATION.
- GUARD AGAINST THE ACCIDENTAL PRESENCE OF WATER IN THE RECESSED MOUNTING BOX AND ENSURE THAT THERE IS NO WATER STAGNATION AND THAT ANY WATER (CONDENSATION, RUN-OFF, LEAKAGE, ETC.) DRAINS AWAY.
- ENSURE THAT THE SEALS/JOINTS BETWEEN THE WALL PLATE AND THE BODY OF THE MIXER ARE CHECKED REGULARLY (AT LEAST ONCE A YEAR) AND REPLACE THE SEALS/WASHERS IF NECESSARY.

Failure to comply with this advice may lead to leakage into the wall, for which Delabie cannot be held responsible.

## Exposed Shower Kit

- Position the shower kit so that the shower head is 2.10m high in relation to the floor.
- **Recessed supply:** use DELABIE elbow connectors ref. 836020 or 838020 for installations with 150mm centres.
- **Exposed supply:** use the DELABIE reinforced wall plate ref. 824800 with four fixing points for a secure assembly.

## Shower Panel Model

- Drill a  $\varnothing$  56 (ref. 790970) or  $\varnothing$  62 (ref. 790975) diameter hole in the panel.
- Unscrew the wall plate.
- Mount the mixer on the panel and replace the wall plate.
- Tighten the three screws using a 3mm Allen key.

## ADJUSTING THE FLOW RATE

The flow rate is pre-set at the factory at 3 lpm (at 3 bar) for washbasins and 12 lpm (at 3 bar) for showers.

- **For washbasins** the flow rate can be adjusted directly on the adjustable flow straightener using a 2.5mm Allen key:

- Notch n°1 = 3 lpm (at 3 bar).
- Notch n°2 = 4 lpm (at 3 bar).
- Notch n°3 = 5 lpm (at 3 bar).



- **If the adjustable flow straightener on a washbasin tap is replaced by an aerator, or a standard flow straightener is fitted to a shower,** the flow rate can be adjusted without shutting-off the water supply or removing the mechanism (fig. 5):

- Unscrew the central cap ⑧ using a pair of circlip pliers.
- Insert a 3mm Allen key in the centre of the push-button. Open the valve and turn the Allen key to achieve the desired flow rate.
- Replace the central cap ⑧.

- **Shower kits fitted with the TONIC-JET, ROUND or GYM shower head** do not require adjustment, the flow rate is restricted to 6 lpm by the integrated flow regulator.

## MAXIMUM TEMPERATURE LIMITER

The mixer is delivered without the temperature limiter engaged. For the UK and Northern Ireland market we recommend installing a thermostatic mixing valve to provide safe, temperature controlled hot water. For all other markets we recommend restricting the maximum temperature for certain users (children, the elderly, etc.).

- Rotate the push-button control ⑩ all the way clockwise, towards the hot water marker and check the temperature of the water (50°C maximum) (fig. 6).
- Unscrew the central cap ⑧ and screw ⑨ and remove the push-button control ⑩ to gain access to the index ring ⑪ with the temperature limiter ⑬ (fig. 7).
- The water temperature at the mixer outlet is governed by the position of the index ring: remove the index ring and replace it at notch 15° and check the maximum temperature at the TEMPOMIX outlet (fig. 7).

**WARNING:** Do not remove the index ring.

## REMEMBER

- **Sizing the pipes correctly** will avoid problems of pressure loss and unwanted noise.
- **Protect the installation** with filters, water hammer absorbers and pressure reducers to reduce the frequency of maintenance. (Recommended pressure: 1 - 5 bar).
- **Install stopcocks** close to the mixer to facilitate maintenance.

- The pipework, stopcocks, mixers and all sanitary ware must be checked regularly, and at least once a year.

## CLEANING & SERVICING

- **Cleaning chrome:**  
Do not use abrasive, chlorine or any other acid-based cleaning products. Clean with soapy water using a cloth or sponge.
- **Frost protection:**  
Drain the pipes and operate the mixer several times to drain any remaining water. If the installation remains unused for a period of time we recommend removing the cartridge mechanism storing it in the shade at room temperature.

## MAINTENANCE

To remove the mechanism (fig. 8):

- Remove the central cap ⑧ using a pair of circlip pliers.
- Unscrew the blocking screw with a screwdriver and remove the push-button control ⑩ by hand.
- Partly unscrew the 3 cartridge-securing screws ⑭ for 4 turns using a screwdriver. The water pressure will raise the mechanism.
- Shut-off the hot and cold water supply using the stopcocks.
- Unscrew the 3 cartridge-securing screws ⑭ completely and remove the locking cap ⑪+⑫ by hand.
- Remove the mechanism by hand.

Impurities in the pipework may cause the valve to malfunction:

Inaccurate or continuous flow (fig. 9):

- Clean the inside of the timing chamber ⑰ using a dry cloth and the calibrated groove ⑱ with a non-metallic pointer.
- Check the condition of the piston lip seal JN29 ⑮, and the O ring JR2 ⑰.

Constant dripping or a trickle of water (fig. 9):

- Check the condition of the O ring JR2 ⑰ and the washer JR6 bis ⑱.

Problems in achieving the correct mixed water temperature :

- Balance the water pressure HW/CW (  $\Delta P < 1$  bar)
- Check that there are no impurities on the non-return valves ① (figs. 1, 2).
- The non-return valves should be checked at least once a year.

NB: The joints between the stainless steel wall plate and the wall, and between the wall plate and the body of the mixer, should be checked at least once a year to ensure that they are watertight. Check more frequently if required, and replace as necessary.

### After Sales Care and Technical Support:

Auckland: 09 624 1115    Wellington: 04 569 8033    Christchurch: 03 348 2356  
email: tech@macdonaldindustries.co.nz  
web: www.macdonaldindustries.co.nz