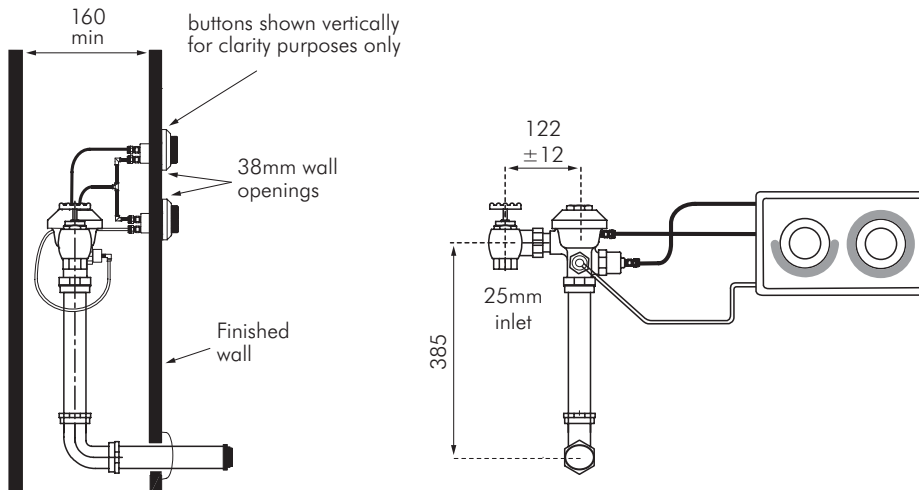


# ZDF-6152L DUAL FLUSH VALVE



## FOR USE WITH W.C. PANS

Dual Flush 6/3L  
 Remote push buttons  
 Non potable supply only  
 Recess mounted



### DESCRIPTION

Zurn Model ZDF-6152L flush valve is a hydraulically actuated toilet flushing valve suitable for installation in buildings with a dedicated non potable supply, either from header tank or pressurized recycled feed. The standard valve is pre-set to deliver a 6/3L flush and has achieved the distinction of Australian Standards Watermark approval and WELS 3 Star rating.

Where tank fed, the pipe design should be completed by a suitably qualified person in accordance with the Drainage & Plumbing Regs 1978. Where pressurized feed is used, caution should be taken to ensure pressure rating is not exceeded. Where pressures exceed 150kPa, use the ZDF-6152XL valve. Recycled water should be clean of all impurities to ensure reliable operation of valve.

Valve is suitable for recess mounting in suitably sized duct space (see drawing above). The valve is sold as 2 separate components, this inwall valve (which is common to all dual flush valves) and the push button assembly.

**Both items must be specified separately. Refer to separate sheet for options on push button assemblies.**

In order to comply with approvals is not possible to remote mount this valve and extend any pipework.

### SPECIFICATION

Suitable for connection to 6 litre back entry pans.

**Minimum Pressure:** 100kPa (pressures less than 100kPa refer to MacDonald Industries for advice)

**Maximum Pressure:** 150kPa

For higher pressures use ZDF-6152XL valve

**Flow Rate:** 90L/min

**Inlet Connection:** 25 BSP

**Flush Volume:** 6/3L adjustable

### MODEL

**ZDF-6152L-25** - c/w 25mm isolator, suitable for pressures 100 - 150kPa.

**Note:** These are the inwall valves only, NOT the push plate/buttons - REFER SEPARATE INFORMATION

